

# SUBMISSION PACK

## MUSEUM ANTHROPOLOGY

*Journal of the Council for Museum Anthropology*

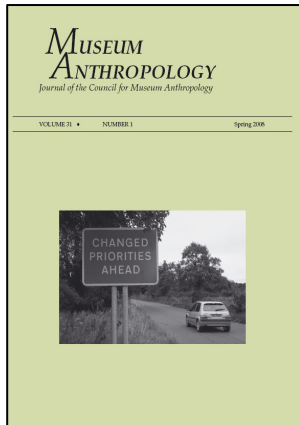
VOLUME 31 ♦

NUMBER 1

Spring 2008



# ABOUT THE JOURNAL



## Editor

Jason Baird Jackson

## Incoming Editors with Volume 33

Chip Cowell-Chanthaphonh

Stephen E. Nash

*Museum Anthropology* seeks to be a leading voice for scholarly research on the collection, interpretation, and representation of the material world. Through critical articles, provocative commentaries, and thoughtful reviews, this peer-reviewed journal aspires to cultivate vibrant dialogues that reflect the global and trans-disciplinary work of museums. Situated at the intersection of practice and theory, *Museum Anthropology* advances our knowledge of the ways in which material objects are intertwined with living histories of cultural display, economics, socio-politics, law, memory, ethics, colonialism, conservation, and public education.

The title publishes in print and is available online via AnthroSource and Wiley InterScience. The contents are widely abstracted and indexed by the prestigious International Bibliography of the Social Sciences; the top anthropological services, Anthropological Index, Anthropological Literature, and eHRAF; as well as key museum resources such as ARTBibliographies Modern and Bibliography of Asian Studies (Online Edition).

## Association / Society Affiliations

*Museum Anthropology* is published by the American Anthropological Association on behalf of the Council for Museum Anthropology.

The Council for Museum Anthropology (CMA) is an all-volunteer membership organization that serves anthropologists and museum professionals dealing with anthropological collections and issues through *Museum Anthropology*, a regular column in the Anthropology Newsletter, and occasional meetings, seminars, and special publications. CMA's mission is to foster the development of anthropology in the context of museums and related institutions.

The American Anthropological Association (AAA), the primary professional society of anthropologists in the United States since its founding in 1902, is the world's largest professional organization of individuals interested in anthropology.

# CALL FOR PAPERS



Submit your paper to a special issue of  
*Museum Anthropology*

## Looking Back, Looking Forward: NAGPRA after Two Decades

In 1990, the United States Congress passed the Native American Graves Protection and Repatriation Act (NAGPRA), thereby forever altering museum collections and exhibits, and the relationship between museums and Native American communities. In this special thematic issue of *Museum Anthropology*, we are seeking innovative studies of NAGPRA's impacts, brief reflections and commentaries, and analyses that investigate the trends of the last two decades and anticipate what is still to come. Particularly welcomed are papers that evaluate whether NAGPRA has led to the kind of spiritual healing that it was intended to facilitate, or whether it has opened old wounds (or made new ones). Less useful for this collection are papers that uncritically report success stories. Viewpoints are encouraged from Native Americans, tribal representatives, museum professionals, federal employees, lawyers, archaeologists, physical anthropologists, and other academic scholars.

The top peer-reviewed articles will be published in the fall of 2010 (vol. 33, n. 2). Initial submissions should not exceed 8,000 words including notes, tables, and references.

**Submissions are due by December 1, 2009.**

Prior to July 1, inquiries and manuscripts should be sent via email to [museanth@indiana.edu](mailto:museanth@indiana.edu), and thereafter to [muaeditor@gmail.com](mailto:muaeditor@gmail.com).

To learn more about *Museum Anthropology* or  
to access a free sample issue, please visit:

**[www.interscience.wiley.com/journal/muan](http://www.interscience.wiley.com/journal/muan)**

# AUTHOR GUIDELINES FOR SUBMISSION

**The Submission Process.** Papers submitted for publication are initially reviewed by the editor and the editorial staff. Following this initial review, papers may then be read by three outside peer-reviewers or returned directly to the author for revision. The work of editorial and peer-review is undertaken with the greatest possible speed and is usually complete within three months of submission. Articles submitted for publication should not have been previously published or be under concurrent review by another journal or as part of an edited book. Authors may suggest the names of potential reviewers, but the editor will not be limited to these suggestions. The editor is available to consult with potential authors prior to the submission of a manuscript for formal consideration.

**Manuscripts.** Article manuscripts submitted to Museum Anthropology should be double-spaced, with at least one inch margins on all sides. An abstract of 75-100 words that summarizes the scope and findings of the paper is required for article submissions. Papers that are sent to external peer-reviewers will be evaluated anonymously. For this reason, authorship, institutional affiliation, mailing address, and acknowledgements should be given separately on the first page of the manuscript in such a way that the editorial staff can easily delete these materials prior to sending the paper to reviewers. The body of the paper should begin on page two, headed only with the paper's title, which should be followed by the abstract and the paper itself.

Manuscripts should be submitted via email, as attachments in Word or Rich Text Format (RTF). Papers that include complex non-English character sets should also be submitted as PDF files. Prior to July 1, inquiries and manuscripts should be sent via email to [museanth@indiana.edu](mailto:museanth@indiana.edu), and thereafter to [muaeditor@gmail.com](mailto:muaeditor@gmail.com).

In matters of style, including the formatting of citations and references, Museum Anthropology follows the American Anthropological Association (AAA) Style Guide (available online at: <http://www.aaanet.org/publications/guidelines.cfm>), the 15th edition of the Chicago Manual of Style, and Merriam-Webster's Collegiate Dictionary. Papers requiring notes should use endnotes rather than footnotes. Article contributions to Museum Anthropology generally should not exceed 8000 words, including notes and other elements. Authors wishing to submit longer works are advised to discuss their proposed projects with the editor.

**Figures.** As submitted, papers should include workable copies of any proposed illustrations (drawings, photographs, maps, etc.). These should not be embedded within the manuscript, but should be forwarded to the editor as one or more separate files. The editor will provide guidance to the authors of accepted manuscripts for the preparation of final illustration materials in appropriate electronic formats.



## Recommend a subscription to *Museum Anthropology*!

Dear Contributor:

Together with the *Museum Anthropology* editorial office, our goal is to make sure the journal is easily accessible to all researchers and students around the world. Please help us achieve that goal by recommending a subscription to your library.

To make *Museum Anthropology* available to your academic community, please complete the Library Recommendation Form provided below and forward it to your librarian or library committee member at your earliest convenience.

An institutional library subscription to *Museum Anthropology* entitles all faculty and students to full online access. For details, please visit [www.wiley.interscience.com](http://www.wiley.interscience.com).

Thank you for supporting *Museum Anthropology*.

Sincerely,

Wiley-Blackwell

P.S. For more journal information, please visit [www.interscience.wiley.com/journal/muan](http://www.interscience.wiley.com/journal/muan)



WILEY-  
BLACKWELL

### Library Recommendation Form

TO: Librarian/Library Acquisition Committee

FROM: \_\_\_\_\_

Position: \_\_\_\_\_

Department: \_\_\_\_\_

I would like to recommend that the library purchase a subscription to:  
**MUSEUM ANTHROPOLOGY**

Print ISSN: 0892-8339

Online ISSN: 1548-1379

Frequency: Bi-Annual

Signature: \_\_\_\_\_

Date: \_\_\_\_\_

I recommend the journal for the following reasons:

\_\_\_ REFERENCE – I will refer to this journal frequently for new research articles related to my work.

\_\_\_ STUDENT REFERENCE – I will be referring my students to this journal regularly to assist their studies.

\_\_\_ BENEFIT TO LIBRARY'S COLLECTION – My assessment of the journal's content and direction is very high. Its acquisition will add to the library's success in fulfilling department, faculty and student needs.

\_\_\_ OWN AFFILIATION – I am member of the journal's editorial board. I therefore, support the journal strongly and use it regularly in my work. I will regularly recommend articles to colleagues and students.

**This journal is published by Wiley-Blackwell**

350 Main Street., Malden, MA 02148, USA

1 800 835 6770 or 781 388 8598

[cs-journals@wiley.com](mailto:cs-journals@wiley.com)