

Author guidelines

The instructions below have been prepared to help authors prepare their manuscript, and if they are followed carefully the time between receipt, review and publication will be minimised. Failure to follow the instructions may make it necessary for the manuscript to be returned for correction, with a consequent delay in review and publication. Failure to follow normal scientific standards or a lack of readability may lead to rejection of the manuscript.

Manuscripts are accepted only in English and spelling should conform to that in *The Concise Oxford Dictionary* or *Webster's New Collegiate Dictionary*. Manuscripts that meet the general requirements for publication in *Physiologia Plantarum* (e.g. fall within the scope of the journal and have been prepared according to the Author Guidelines) will be sent for review.

Cover letter

Authors should include a cover letter detailing the key findings of their manuscript. The cover letter should highlight the novel aspects of their data and briefly describe how the authors feel their results will generate progress in their field. If the species investigated is not a common experimental species, the authors should indicate what basic scientific/biological reason dictated their choice of species and what new insights have been gained from its use. Furthermore, if the authors feel their work merits publication as a breakthrough paper, they should indicate this in the cover letter and highlight the reasons that they feel justify expedited handling of their manuscript.

Online submission

Physiologia Plantarum **only** accepts manuscripts via our online submission site. For online submissions, please visit our ScholarOne Manuscripts site at <http://mc.manuscriptcentral.com/ppl>. Prepare your manuscript using a word processing program and save it as a DOC, RTF or PS file. Image files such as TIFF, PDF or EPS may be uploaded. All uploaded files will be combined to a single PDF and to a tagged HTML proof for peer review. The original files that you upload will be saved and can be accessed by the editorial office if necessary. Note: if the manuscript text is submitted as a PDF file the HTML tags do not work so PDF should be avoided for the original text file. Please submit names and email addresses of 4 potential reviewers. Information may also be given to avoid potential conflicts of interests.

Online Accepted

Articles in this journal which have been peer-reviewed and accepted, but not yet copy-edited, are pu-

blished online through our Online Accepted feature in advance of print publication. Go to <http://www3.interscience.wiley.com/journal/118510326/accepted> to see the articles currently available. At this time Supporting Information cannot be published at the Online Accepted stage. Any required Supporting Information will be available online from the Early View stage.

Formats, organization and style

General. In order for manuscripts to be suitable for publishing as Online Accepted papers, authors are required to adhere strictly to the following guidelines. The entire manuscript must be typed 1.5-spaced. Text should be typed in Times New Roman, 11 point. Left and right margins should be 25 mm. All pages must be paginated. Italics should be used only for scientific names, genes and other terms where appropriate. Footnotes should be avoided.

Units. The SI system should be used throughout.

The first page of the manuscript should include:

Title

Full name(s) of author(s) (the corresponding author should be indicated)

Address(es) of author(s) (including fax and email address for the corresponding author)

The second and subsequent pages should include:

Abstract

Abbreviations

Introduction

Materials and methods

Results

Discussion

Acknowledgements

References

Supporting Information

Tables

Figure legends

Figures

Consult recent issues for the correct layout.

Abstract

The abstract must not exceed 250 words in length and should clearly state the problem being addressed, the methods employed and the main results. The scientific name(s) and, where applicable, cultivar or variety of the plant(s) used should be spelled out in full in the abstract. EC numbers should be given for enzymes mentioned. The Abstract should not be divided into paragraphs.

Abbreviations (in alphabetical order)

Necessary explanations of abbreviations used should have the form:

DPC, diphenylcarbazine; PQ, plastoquinone.

Standard abbreviations need not be defined in this section. Avoid complicated abbreviations of your own that make reading difficult. Abbreviations in the Introduction and following text should generally be written out in full with each abbreviated form in parenthesis the first time that it is mentioned.

Introduction

This should be concise, giving the reader an outline of the subject, presenting the “state-of-the-art”, leading into the reasons for the present study and its aims. Text references should have the form: Gould and Lister (2005) or Dixon et al. (2005), if more than two authors. Multiple text references should be cited chronologically (Inoue et al. 1995, Koes et al. 2005, Ono et al. 2006).

Materials and methods

Give the full scientific name(s) of plant(s) used, as well as the cultivar (cv.) or variety (var.), where applicable. All growth conditions should be properly described. Include the trade name and manufacturer of all lamps used, as well as irradiance ($W\ m^{-2}$) or photosynthetic photon flux density ($\mu\text{mol}\ m^{-2}\ s^{-1}$); lux or μE are not acceptable. The trade name(s) and suppliers of apparatus and chemicals used should also be given. EC numbers should be given for enzymes used.

If the data includes microarray analysis, authors should refer to the MIAME recommendations: <http://www.mged.org> for guidance in preparing their manuscripts.

Results

Make the text (written in the past tense) as objective and descriptive as possible. Refer to figures and tables as Fig./Figs. and Table/Tables. It is important that references to figures and tables are consistent throughout the manuscript so that figure and table tags work properly in the HTML proof.

Discussion

The Discussion should not merely repeat the catalogue of results. The authors should show how their findings advance our knowledge and understanding of the topic they are investigating. The Discussion should be concisely written with the main points of the work logically presented and with reference to the relevant tables, figures and literature.

References

List alphabetically according to the first author:

Kaplan F, Sung DY, Guy CL (2006) Roles of β -amylase and starch breakdown during temperature stress. *Physiol Plant* 126: 120-128

Taiz L, Zeiger E (2006) *Plant Physiology*. 4th edition, Sinauer Associates Inc, Sunderland MA, pp 764

When more than one paper has the same first author, the references should be arranged in chronological order.

Unpublished material (except for accepted manuscripts in press) and personal communications should only be cited in the text, and not in the references. In the text, the initials and last names of all collaborators should be given where unpublished work is cited. Theses may not be cited in References unless they have been published (include ISBN, or number in Dissertation Abstracts). Unpublished theses may be cited only in the text as follows: (R. Y. Smith 2007. Thesis, Univ. of California, Davis, CA, USA).

Proceedings, transactions and monographs, and books with different chapter authors:

Hurry V, Igamberdiev AU, Keerberg O, Pärnik T, Atkin OK, Zaragoza-Castells J, Gardeström P (2005) Respiration in photosynthetic cells: gas exchange components, interactions with photorespiration and the operation of mitochondria in the light. In: Lambers H, Ribas-Carbós M (eds) *Plant Respiration: From Cell to Ecosystem*. *Advances in Photosynthesis and Respiration*, vol 18, Springer, Dordrecht, pp 43-61

For further examples see recent issues of the journal.

Supporting Information

Authors are welcome to submit additional “Supporting Information”, such as data sets or additional figures or tables. This material will not be published in the print edition of the journal but it will be viewable via the online edition. Such supporting information should be referred to in the text as, for example, “see Appendix S1 in Supporting Information”.

Supporting files are hosted by the Publisher in the format supplied by the author and are not copy-edited by the Publisher. It is the responsibility of the author to supply supporting information in an appropriate file format and to ensure that it is accurate and correct. Prior to publication, authors will be sent the URL of their Supporting Information for them to check the content. Extensive editing of material is not possible at this stage and the author has the responsibility to ensure that material is sent in a correct form at the time of submission.

Authors should include a ‘Supporting Information’ section immediately after their References section,

which should be in the following form:

Supporting Information

Additional Supporting Information may be found in the online version of this article:

Appendix S1 Short title of supplementary appendix S1*

Appendix S2 Short title of supplementary appendix S2

Please note: Wiley-Blackwell Publishing are not responsible for the content or functionality of any supplementary materials supplied by the authors. Any queries (other than missing material) should be directed to the corresponding author for the article.

*Only short titles to appendices should be given in this section; full titles can be given with the Supporting Information itself.

Tables

Each table should be on a separate sheet furnished with explanatory headings. Tables must be planned to fit a printed width of either 80 or 166 mm. Footnotes are usually not allowed.

Figures

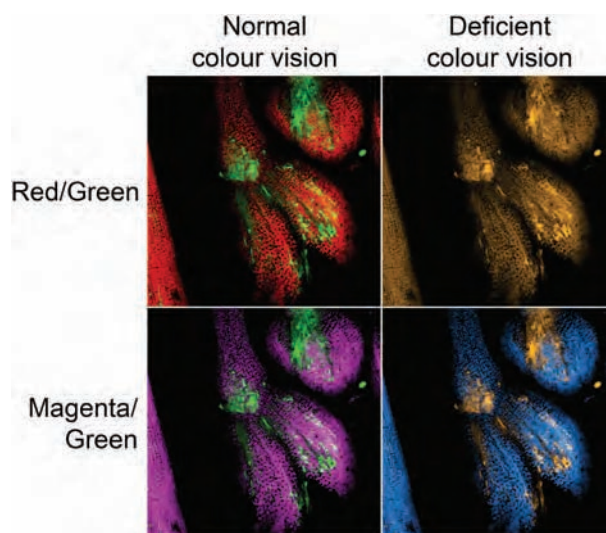
Each complete figure should be placed in a separate file. Save photographic images in TIFF format at a resolution of no less than 300 dpi. Line art and combination figures should be saved in PDF, EPS or TIFF format at a resolution of no less than 600 dpi. The colour mode for black and white figures should be greyscale. Colour images should be saved in RGB colour mode. Save TIFF files using LZW compression.

Figures should be planned to appear with a maximum final width of 80 mm (single-column), 125 mm (1.5 column) or 166 mm (double-column). The font used in figures should be either regular Helvetica or regular Arial. Letters, numbers and symbols must appear clearly but not oversized. A suitable final size for lettering is 1-2 mm at reproduction size. One uniform size throughout is generally recommended.

Avoid complicated symbols or patterns. Use open and closed circles, squares and triangles; open, striped and closed bars in histograms. Each figure should be boxed in and scale marks (turning inwards) provided. Lines should be clear, but not thick and heavy.

Full artwork guidelines are available from the Publisher's website: <http://authorservices.wiley.com/bauthor/illustration.asp>.

Colour vision impaired readers. When preparing your figures please take into account that some readers have deficient colour vision. Images of fluorescent



double-staining micrographs and DNA chips should preferably not contain a combination of red and green. Please use magenta and green instead. Also avoid using red characters on a dark background.

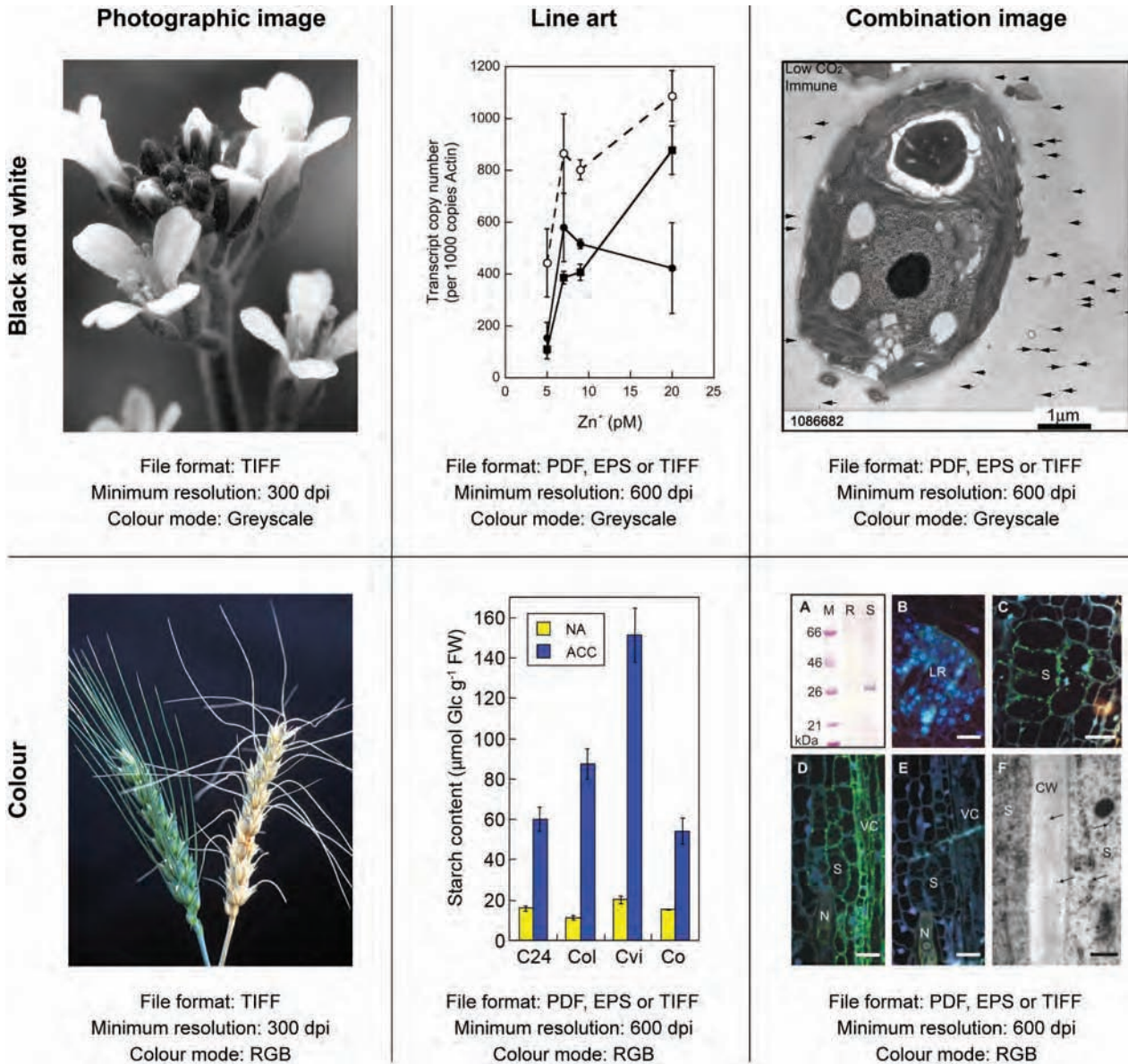
In colour graphs and line art, use both colour and shape (different symbols and line types) to convey information. More detailed information can be found at: <http://jfly.iam.u-tokyo.ac.jp/color/>.

Image processing. Photographic images submitted to the journal should be minimally processed. No parts, regions or specific features of an image may be changed, moved, removed, obscured or enhanced. Changes to brightness, contrast and colour balance are allowed if they are applied to the whole image and equally to controls and provided no information in the original is misrepresented by the adjustments.

Images from different parts of a gel, or from different gels, that are grouped into a single figure must be clearly separated, e.g. with dividing lines.

All images in manuscripts accepted for publication will be scrutinized by the editorial office. Any indication of improper image manipulation will be reported to the Editor-in-Chief, who may request original image files and/or data from the authors. Failure to comply may lead to the acceptance of the manuscript being revoked.

Colour figures. Printed colour figures are charged as follows: First figure GBP150, subsequent figures GBP50 each. If there is colour artwork in your manuscript when it is accepted for publication, Wiley-Blackwell Publishing requires you to complete and return a Colour Work Agreement Form before your paper can be published. This form can be downloaded as a PDF from the following web address: http://www.blackwellpublishing.com/pdf/SN_Sub2000_F_CoW.pdf. However, you may have any colour figures published in colour on the journal web site free of



charge. Please indicate this on the Colour Work Agreement Form.

Cover photographs

Authors are welcome to submit high quality photographs suitable for the cover of *Physiologia Plantarum*. They should be supplied as digital images with a resolution of no less than 300 dpi at a reproduction size of 213 mm wide x 176 mm tall. Digital images should be saved in TIFF format using LZW compression. Potential cover photographs should be sent to the Editorial Office and be accompanied by a brief descriptive summary.

Copyright

Authors submitting a manuscript do so on the understanding that the work has not been published before, is not being considered for publication el-

sewhere and has been read and approved by all authors. Authors will be required to sign an Exclusive Licence Form for all manuscripts accepted for publication. Signature of the Exclusive Licence Form is a condition of publication and manuscripts will not be passed to the publisher for production unless a signed form has been received. Please note that signature of the Exclusive Licence Form does not affect ownership of copyright in the material. (Government employees need to complete the Author Warranty sections, although copyright in such cases does not need to be assigned). After submission authors will retain the right to publish their manuscript in various media/circumstances (please see the form for further details). An appropriate form can be downloaded as a PDF from the following web address: http://www.blackwellpublishing.com/pdf/PPL_ELF.pdf. The form can also be supplied by the editorial office.

Please return completed Exclusive Licence Forms to:

Physiologia Plantarum
S:t Lars väg 44B (4 tr)
S-222 70 Lund
Sweden

Production contact

The Exclusive Licence Form and the Colour Work Agreement Form can also be acquired by contacting the Production Editor (ppl@wiley.com) who will be able to email or fax a form to you.

Production Editor
Physiologia Plantarum
Wiley-Blackwell
John Wiley & Sons Singapore Pte Ltd
1 Fusionopolis Walk
#07-01 Solaris South Tower
Singapore 138628
FAX: +65 6643 8599

Publication

Publication in *Physiologia Plantarum* implies an obligation on the part of authors to deposit any novel nucleic acid sequence data referred to in their papers with the EMBL Data Library. Deposition of such data should, at the latest, be made immediately after the paper has been accepted for publication, so that the authors can add the relevant accession number from the Data Library at the end of the text at the page proof stage. Details of how to submit data to the EMBL Data Library can be found in *Nucleic Acids Research*, Vol. 18, issue 1.

After editorial review and acceptance, the manuscript is sent to the Publisher.

Proofs. The corresponding author will receive an email alert to download a PDF (portable document format) file of the proof. Acrobat Reader will be required in order to read this file. This will enable the file to be opened, read on screen, and printed out in order for any corrections to be added. Further instructions will be sent with the proof. Changes against the manuscript at this stage will be billed at cost if they exceed 5% of the total.

Offprints. Corresponding authors will receive PDF offprints of their paper, with web-optimised figures, via email free of charge. Printed copies with high resolution figures may be ordered at prices quoted on the order form which accompanies proofs, provided that the form is returned with the proofs. The

cost is more if the order form arrives too late for the main print run. Printed offprints are normally dispatched within three weeks of publication of the issue in which the paper appears. These will be charged in GBP by Wiley-Blackwell Publishing.

The attention of the Editorial Office should be drawn to significant errors that are discovered after publication, so that they may be included in a list of Errata.

Early View

Physiologia Plantarum is covered by Wiley-Blackwell Publishing's Early View service. Early View articles are complete full-text articles published online in advance of their publication in a printed issue. Articles are therefore available as soon as they are ready, rather than having to wait for the next scheduled print issue. Early View articles are complete and final. They have been fully reviewed, revised and edited for publication, and the authors' final corrections have been incorporated. Because the articles are in final form, no changes can be made after online publication. The nature of Early View articles means that they do not yet have volume, issue or page numbers, so Early View articles cannot be cited in the traditional way. They are therefore given a Digital Object Identifier (DOI), which allows the article to be cited and tracked before it is allocated to an issue. After print publication, the DOI remains valid and can continue to be used to cite and access the article.

Fees and privileges

Six printed pages (one printed page of full text is equivalent to 5600 characters, including spaces) per paper are offered free of charge. Pages in excess of six must be paid for by the author (GBP45/USD85 per page). It is therefore in the interest of the authors to focus their papers as much as is practical. Verbose manuscripts will be returned with a request for condensation. Although there are charges for printed colour figures (first figure GBP150, subsequent figures GBP50 each), all authors may have colour figures published in colour on the journal web site free of charge.

Online Open

Authors who wish their published paper to be freely available can choose to publish it as an Online Open paper. There is a basic fixed fee of USD3000 for Online Open. Excess page charges and colour artwork will need to be paid for separately. Publication of Online Open papers is conditioned upon the author signing the Open Access Exclusive License Form.