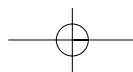
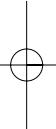
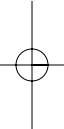
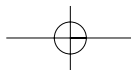
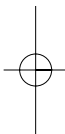
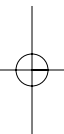
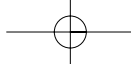


**Part  
I**

**Conception and  
Conceptus Development**





## 1

# Early conceptus growth and immunobiologic adaptations of pregnancy

*Kenneth H.H. Wong and Eli Y. Adashi*

Reproduction will only be successful if a multitude of intricate sequences and interactions occur. This reproductive process begins with the formation of individual male and female gametes. Following gamete formation, a mechanism must be provided to ensure that these gametes attain close proximity to each other so fertilization may take place. After successful fertilization, the newly formed embryo must develop correctly and finally implant in a nourishing environment. Recently, there have been many advances in the understanding of these reproductive processes; however, it is beyond the scope of this chapter to provide detailed information on gamete formation, fertilization, and implantation. The interested reader is referred to several excellent texts for more specific information.<sup>1,2</sup> Rather, this chapter summarizes key normal developmental and physiologic events in early conceptus growth and immunobiologic adaptation of a pregnancy.

## Gametogenesis

Gametogenesis is the maturational process that produces specialized gametes: the spermatozoon in the male and the oocyte in the female. Both cytorreduction and division prepare gametes for fertilization, which involves the union of male and female gametes. In order to maintain a constant chromosome number, the gametes undergo meiosis, a specialized form of cell division responsible for reducing the diploid number (46) of chromosomes to the haploid number (23).

At approximately 5 weeks of gestation, primitive germ cells migrate, presumably by way of ameboid movement from the yolk sac to the gonadal ridges. Following their migration, the germ cells are surrounded by somatic cells derived from the mesonephros forming the primary sex cords.<sup>3</sup>

In the first meiotic division, homologous chromosomes pair during prophase. In the pachytene stage of prophase, independent assortment and recombination of genetic material occurs among the gametes. Separation of the paired chromosomes occurs in anaphase, whereupon each new daughter cell

contains the haploid chromosome number or 23 double-structured chromosomes.

Shortly after the first division, the cell enters the second meiotic division. Each double-structured chromosome divides to form two separate chromosomes containing one chromatid. The resultant products include four daughter cells each containing the haploid number of chromosomes. Thus, one primary oocyte gives rise to four daughter cells, each receiving 22 autosomes and an X chromosome, and the primary spermatocyte gives rise to four daughter cells, each receiving 22 autosomes and either an X or a Y chromosome.

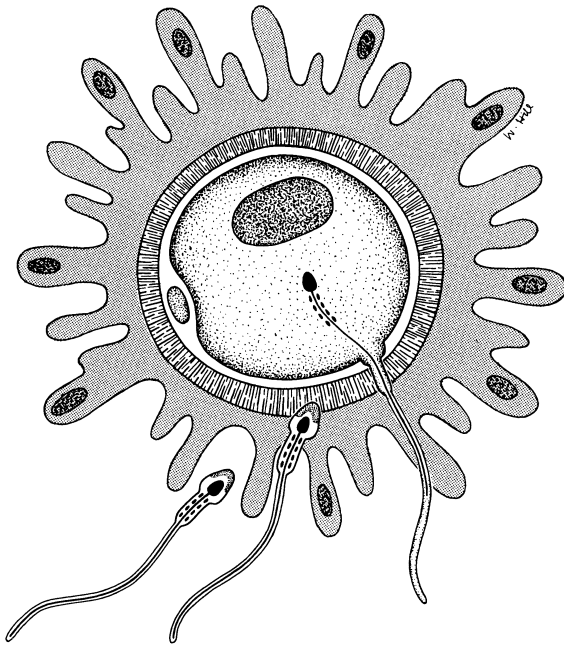
## Fertilization

Embryonic development begins with the process of fertilization, the union of individual male and female gametes (Fig. 1.1). The fusion of two haploid cells, each bearing 22 autosomes and one sex chromosome, creates an offspring whose genetic makeup is different from that of both parents. Fertilization consists of a regulated sequence of interactions that will ultimately result in embryo development (Fig. 1.2).

Prior to any sperm-egg interaction, a requisite maturation of spermatozoa, termed capacitation, must occur.<sup>4,5</sup> The spermatozoa gain this ability during the transit through the female reproductive tract. Triggered exocytosis is the final consequence of capacitation.<sup>6</sup> The importance of capacitation has long been recognized, with the initial observation that capacitated sperm can readily penetrate the cumulus.<sup>7</sup> Capacitation is characterized by the acrosome reaction (AR), the ability to bind to the zona pellucida (ZP), and the acquisition of hypermobility.

Spermatozoa must pass through an investment of cells and matrices, the cumulus, before any sperm-egg interaction may take place. The cumulus is composed of granulosa cells and a matrix consisting primarily of hyaluronic acid and proteins. Sperm capacitation and the hyperactivated motility seem to be important in the sperm's ability to penetrate the cumulus. Investigations have revealed that the sperm protein PH-20 is

## CHAPTER 1



**Figure 1.1** Fertilization. A sperm is shown penetrating an oocyte. The spermatozoon must first undergo capacitation. Next, the sperm must penetrate the cumulus (the investment of cells and matrix surrounding the oocyte). After cumulus penetration, the sperm binds to the zona pellucida via specific receptors. The plasma membranes of the sperm and oocyte fuse. The sperm and tail of the sperm enter the oocyte, leaving the sperm's plasma membrane.

also involved with cumulus matrix penetration.<sup>8</sup> Although PH-20 degrades hyaluronic acid and possesses similar protein properties to hyaluronidase, the exact role of this enzyme still remains uncertain.

The ZP is an acellular glycoprotein coat that covers and protects the ovum. The ZP is the last physical barrier that spermatozoa must pass before fertilization with the ovum. The initial interaction between the sperm and the oocyte ZP appears to be a receptor-mediated process. The ZP consists principally of three heavily glycosylated proteins: ZP1, ZP2, and ZP3.<sup>9,10</sup> Extensive studies, especially in the mouse, have revealed ZP2 and ZP3 function in sperm binding, whereas ZP1 serves a structural role.<sup>5,11</sup> Moreover, ZP3 has been demonstrated to be responsible for primary sperm binding (binding prior to the acrosome reaction) and triggers the acrosome reaction, while ZP2 is involved with secondary binding (binding with sperm following the acrosome reaction).<sup>12,13</sup>

The AR involves fusion between the sperm's plasma and acrosomal membrane with exocytosis of the enzyme contents of the acrosome. These enzymes, including hyaluronidase and acrosin, appear to play a role in ZP penetration. Furthermore, the AR changes the sperm head membranes in preparation for the eventual fusion of the inner acrosomal membrane with the

Completion of capacitation in the oviductal isthmus

Admission into and through the cumulus matrix

Primary binding to ZP3 on the sperm plasma membrane

Triggering of acrosomal exocytosis

Secondary binding to ZP2 using components exposed after the acrosomal reaction

Autoactivation of proacrosin to acrosin, with attendant digestion through the ZP matrix

Binding, followed by fusion between sperm and egg plasma membranes

**Figure 1.2** Proposed sequence for mammalian gamete interaction. ZP, zona pellucida. (Adapted from ref. 35, with permission.)

oocyte's plasma membrane. Acrosome-intact sperm are unable to fuse with oocytes.<sup>14</sup> Thus, the AR is an absolute prerequisite for sperm fusion with the oocyte membrane.

Once the ZP has been penetrated, the spermatozoon enters the perivitelline space at an angle and crosses quickly. The sperm then binds to the oocyte plasma membrane (oolemma) and soon the entire head enters the cytoplasm of the oocyte (ooplasm). Subsequently, there is fusion of the sperm and egg membranes with specific proteins mediating this process. One such fusion protein is fertilin (formerly called PH-30).<sup>8,15</sup> This sperm membrane protein appears to bind to the oolemma via an integrin receptor-mediated mechanism.<sup>8</sup> Following fusion, several morphologic and biochemical events are initiated in the fertilized ovum.

Upon fusion of the egg and sperm membranes, there is a triggering of the cortical and zona reactions. As a result of the release of cortical granules in the oocyte, the oolemma becomes impenetrable to spermatozoa. Furthermore, the ZP alters its structure, possibly due to ZP2 and ZP3 protein rearrangement, to prevent further sperm binding.<sup>5</sup> These are the primary blocking mechanisms to polyspermy.

Besides the cortical and zona reactions, a number of biochemical and molecular events are activated in the oocyte after sperm-egg fusion. Initially, there is a transient release of

## EARLY CONCEPTUS GROWTH AND IMMUNOBIOLOGIC ADAPTATIONS OF PREGNANCY

intracellular calcium in a repeated oscillatory fashion.<sup>16,17</sup> These calcium pulses may be initiated by membrane depolarization and propagated through inositol triphosphate production. Consequently, the release of calcium induces exocytosis of the cortical granules. Eventually, these events will lead to initiation of the cell cycle and DNA synthesis.

Upon initiation, the oocyte will resume the second meiotic division that had been arrested at metaphase 2. One of the daughter cells will be extruded as the second polar body, while the other daughter cell, containing a haploid number of chromosomes, becomes the definitive oocyte. Restoration of the diploid number of chromosomes results from the addition of chromosomes from the sperm upon fertilization.

The female pronucleus is formed from the maternal chromosomes remaining in the oocyte. Meanwhile, the sperm head's chromatin decondenses, while enlarging the head in the ooplasm, forming the male pronucleus. The two pronuclei enlarge and migrate toward each other in the center of the fertilized egg. As the pronuclei move into close proximity, the nuclear membranes break down. Syngamy then begins as the chromosomes condense during the first cell division.

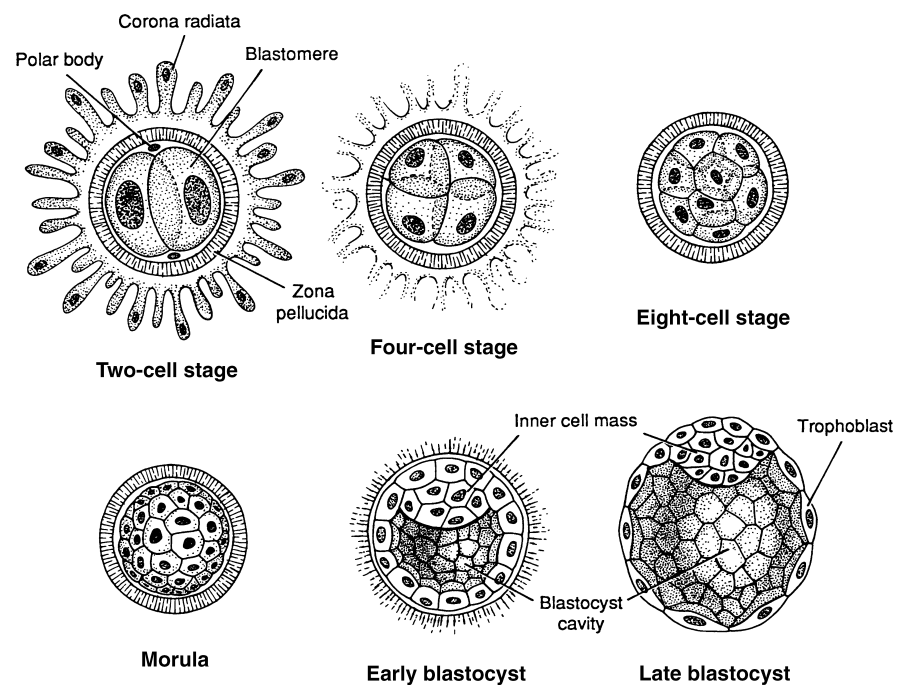
## Preimplantation embryo

The initial phases of embryonic growth following fertilization are concerned with rapid cell division (Fig. 1.3). This initial increase in cell numbers is critical in establishing a sufficient number of cells in the embryo, which can then initiate differentiation. These cells are known as blastomeres. Beginning

with the first division, approximately 24–30 hours after fertilization, the blastomeres become smaller with successive divisions. Until the eight-cell stage, the cells are in a loosely arranged clump; however, following this cleavage stage, blastomeres begin merging into a coherent mass of cells marked by the formation of gap and tight junctions.<sup>18,19</sup> This process of compaction segregates inner cells from outer cells and represents the onset of embryonic differentiation. Approximately 3 days after fertilization, the berry-like mass of cells, termed the morula, enters the uterus.

The next event in embryo development is the formation of a fluid-filled cavity, the blastocoele. With blastocyst formation, there is a partitioning of cells between an inner cell mass, the embryoblast, and an outer mass of cells, the trophoblast. E-cadherin, a molecule involved with cell–cell binding, seems to be important for trophoblast and blastocyst formation.<sup>20</sup> This polarization of blastomeres permits differentiation to proceed. Differentiation allows for the development of the three primitive tissue layers: the endoderm, mesoderm, and ectoderm. The primitive endoderm arises from a flattened layer of cells, the hypoblast, which lies on the surface of the inner cell mass and faces the blastocoele. Meanwhile, both the mesoderm and the ectoderm develop from the epiblast, the high columnar cell of the inner cell mass.

Until this stage in its growth, the blastocyst is still entirely surrounded by the ZP. The primary function of the ZP appears to be prevention of polyspermy. However, the ZP must be shed prior to embryo implantation to allow for the increasing cell mass and to enable contact between the embryo and the endometrium. This is achieved by hatching, where the embryo wiggles and squeezes out of this investment through a hole. In



**Figure 1.3** Cleavage and blastogenesis. Cleavage occurs in stages and results in the formation of blastomeres. The morula is composed of 12–16 blastomeres. The blastocyst forms when approximately 60 blastomeres are present. Note that the zona pellucida has disappeared by the late blastocyst stage. Until the zona pellucida is shed, the developing embryo essentially does not increase in size.

## CHAPTER 1

mice, the initial hole in the ZP is created by the enzyme trypsin.<sup>21</sup> In contrast, the exact mechanism in the human is still unknown, and human hatching has only been seen *in vitro*.<sup>22</sup>

After entering the uterus, the developing blastocyst floats inside the endometrial cavity for about 2–3 days. The embryo begins implantation approximately 6 days after fertilization, while the primitive germ layers develop between days 6 and 8. Following initial implantation, the embryo is completely imbedded within the endometrium by approximately 8–9 days after ovulation.

### Intermediary metabolism in the developing embryo

Like all other cells, the developing embryo has nutritional requirements and possesses few nutrient stores, so it must depend on external sources. The metabolic requirements may vary depending on the particular embryonic stage of development. One requirement of particular interest is that pyruvate appears to be the major energy source for early embryo development, while glucose metabolism becomes activated in later cleavage stages. Besides pyruvate and glucose, there are many embryo nutrients and stimulants, including amino acids, intermediaries regulating calcium, and free radical scavengers, to name a few (see Fig. 1.4).

### Molecular synthesis in the developing conceptus

The early conceptus exhibits a high level of metabolic activity and is capable of the synthesis and secretion of a number of macromolecules that have diverse effects on the success of implantation, placentation, and maintenance of pregnancy.

Among the earliest substances secreted by the preimplantation embryo is a soluble ether phospholipid, platelet activating factor (PAF). Correlation between the production of embryo-derived (ED)PAF and the pregnancy potential of embryos suggests that it may serve a fundamental role in the establishment of pregnancy.<sup>23</sup> Apparently, human embryos release variable amounts of PAF within 48 hours after fertilization.<sup>24</sup> Conclusive evidence for the essential role of PAF in the establishment of pregnancy was provided by Spinks and O'Neill, who used inhibitors of PAF activity *in vivo* to induce implantation failure in animals.<sup>25</sup>

Human chorionic gonadotropin (hCG) is a glycoprotein composed of one  $\alpha$  and one  $\beta$  subunit with amino acid sequences similar to luteinizing hormone. It is produced by the early human trophoblast beginning about the eight-cell stage and is essential for the survival of the conceptus by stimulating progesterone production from the corpus luteum and thus preventing luteolysis and menstruation. In the human, implantation occurs on day 6 after ovulation, and hCG is first measurable on day 9 following ovulation.<sup>26</sup> The hCG production

of human blastocysts *in vitro* has been correlated with their morphology and maturity, with the best embryos producing more hCG.<sup>27</sup>

Early pregnancy factor (EPF) has been described based on an alteration in lymphocytic reactivity in the lymphocyte rosette test, which was devised to assess the immunosuppressive characteristics of antilymphocyte serum *in vitro*.<sup>28</sup> Isolation of EPF in embryo growth media has been reported in several species. An immunosuppressive role has been implicated, possibly by modulating the maternal immune system.<sup>29</sup> Recently identified as part of a highly conserved heat shock family of molecules, EPF consists of an amino acid sequence with approximately 70% homology to chaperonin 10 and may be involved in protein binding.<sup>30</sup> EPF becomes positive in maternal serum as early as 24–48 hours after conception and therefore may be useful in the evaluation of early pregnancy failure.<sup>31</sup> Consequently, disorders of menstruation may be distinguished from early spontaneous abortion.

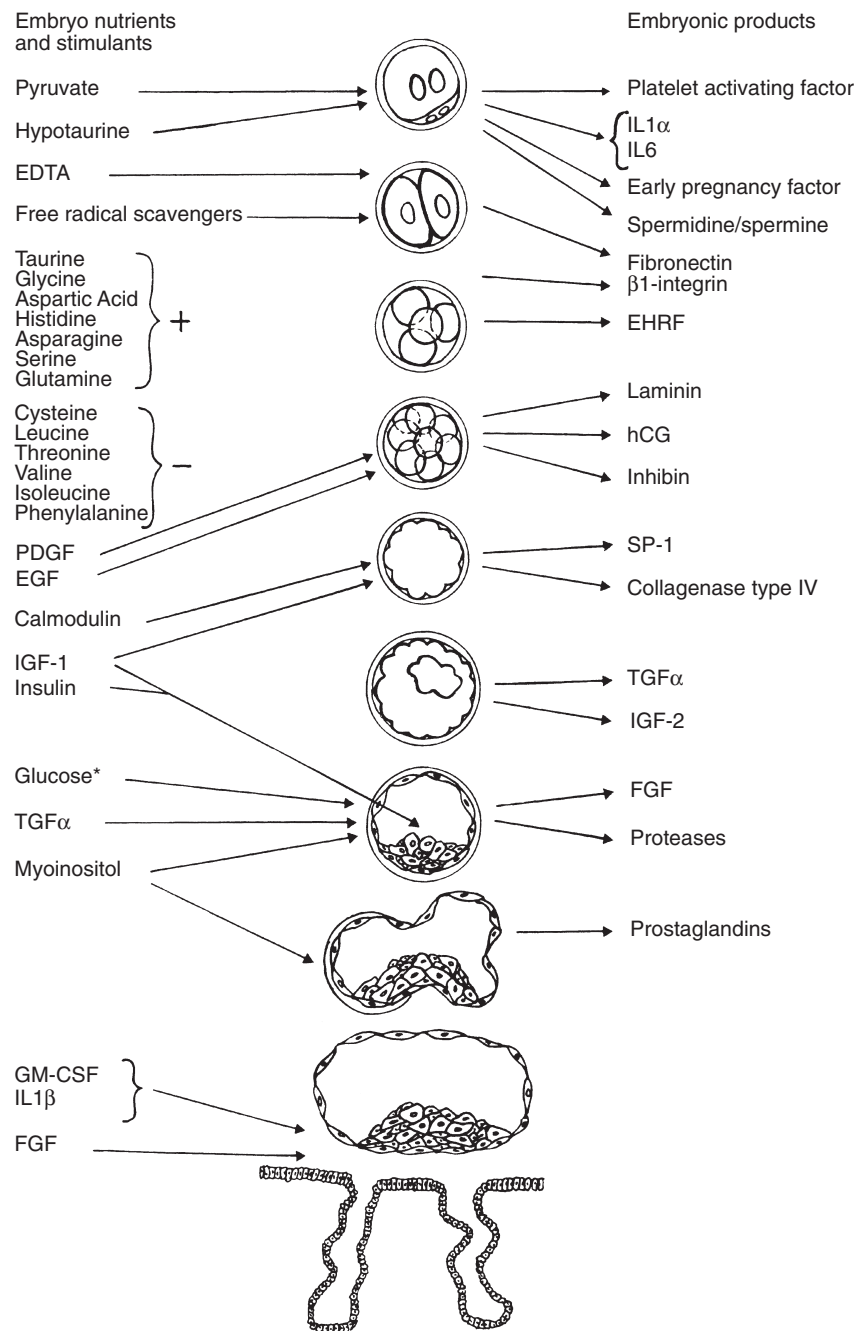
The human zygote produces a factor *in vitro* that is directly immunosuppressive.<sup>32</sup> Unlike the immunosuppressive actions of EPF or EDPAF, the actions of immunosuppressive factor (IF) are direct. The factor obtained from culture media of human embryos after *in vitro* fertilization suppresses mitogen-induced proliferation of peripheral lymphocytes, and those embryos producing the factor alone result in pregnancy. The presence of embryo-associated IFs at various stages of gestation may play a role in suppressing maternal cellular immune responses and prevent maternal rejection of the fetal allograft. Although IF was thought initially to derive from the developing embryo, recent evidence has localized IF to decidual cells.<sup>33</sup>

Although the mechanism has not been elucidated, histamine is thought to play a role in implantation of the blastocyst. Embryo-derived histamine releasing factor (EHRF) has been identified in culture medium used to grow developing embryos.<sup>34</sup> Both calcium and temperature dependent, EHRF induces histamine release from sensitized basal cells. Although the role of this factor remains to be clarified, EHRF could represent a message sent by the embryo to the mother to induce histamine release at the time of implantation.

### Cytokines and growth factors regulating implantation

A critical stage in development involves embryonic implantation, a continual synchrony between the embryo itself and a complex series of molecular and cellular events induced in the uterus by estrogen and progesterone. Much of this maternal environment/embryonic “talk” is mediated in an autocrine/paracrine manner by cytokines and growth factors produced by both the embryo and the uterus. Although there exists a myriad of information concerning cytokine and growth factor involvement with implantation, the complete details of this mechanism are still incomplete. For a more comprehensive

## EARLY CONCEPTUS GROWTH AND IMMUNOBIOLOGIC ADAPTATIONS OF PREGNANCY



**Figure 1.4** Embryonic nutrients and secreted products. EDTA, ethylenediaminetetraacetic acid; EGF, epidermal growth factor; EHRF, embryo-derived histamine-releasing factor; FGF, fibroblast growth factor; GM-CSF, granulocyte-macrophage colony-stimulating factor; hCG, human chorionic gonadotropin; IGF, insulin-like growth factor; IL, interleukin; PDGF, platelet-derived growth factor; TGF, transforming growth factor. (From ref. 55, with permission.)

review, the interested reader is referred to several reviews.<sup>35,36</sup> At least three cytokines, colony-stimulating factor 1 (CSF-1), leukemia inhibitory factor (LIF) and interleukin 1 (IL-1) appear to be involved in implantation.<sup>37</sup>

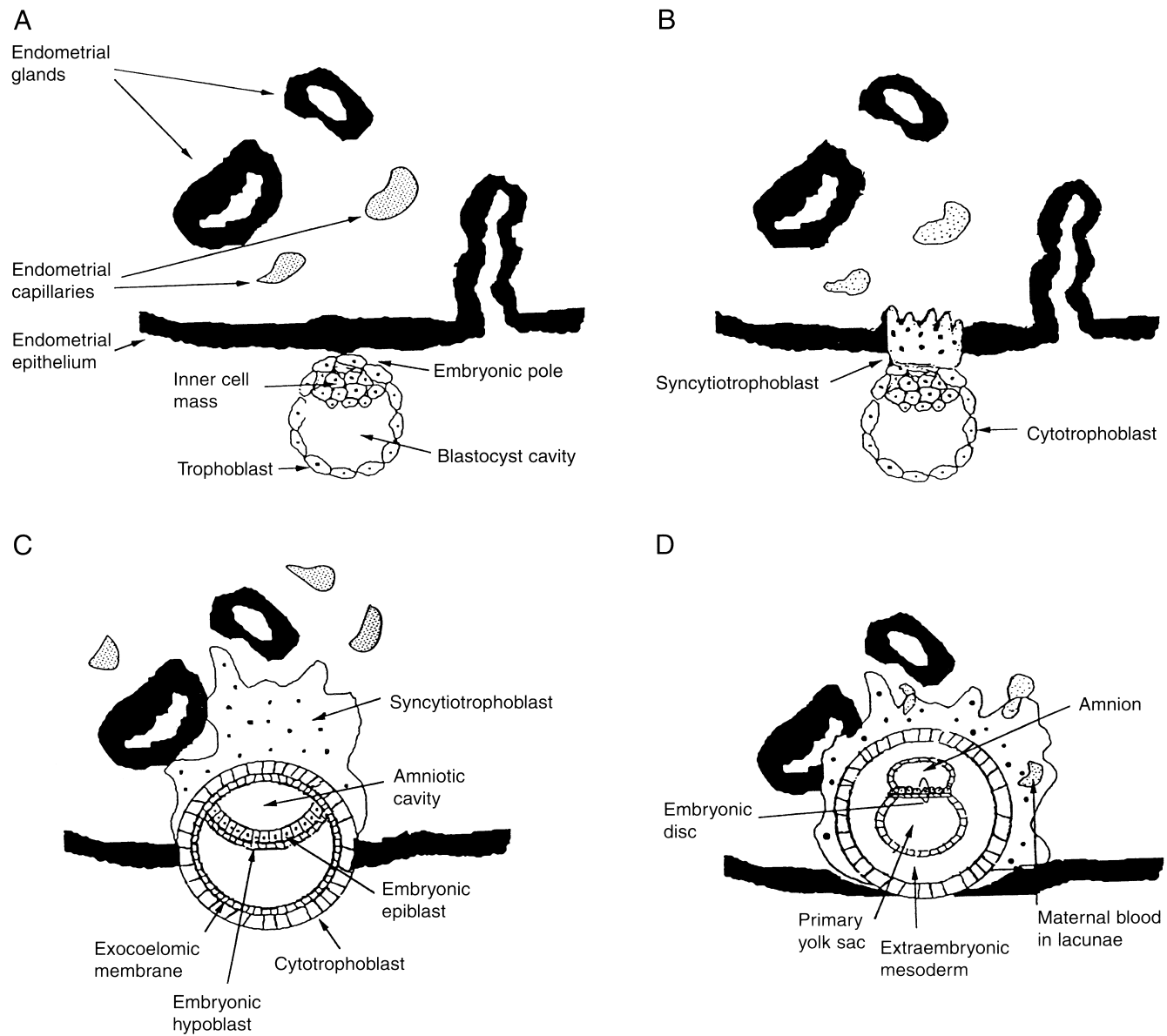
### Apposition and adhesion of the embryo to the endometrium

The blastocyst lies unattached in the uterine endometrial cavity for approximately 2 days before implantation. Implan-

tation begins as the embryo becomes closely apposed to the endometrial epithelium (Fig. 1.5). The initial contact is made via the polar trophoctoderm. Apposition seems to allow the complementary binding proteins of the embryo and endometrial epithelium to function effectively during implantation by the interdigitating of epithelial cells and trophoblast with microvilli.

The adherence of the blastocyst to the endometrial epithelium appears to be mediated through ligand-receptor complexes. The expression of specific adhesion molecules, such as integrins, in the embryo and specific substrates and receptors,

## CHAPTER 1



**Figure 1.5** Implantation. (A) After floating free for 2 days, the polar trophoblast of the embryo apposes the endometrial epithelium. (B) Penetration begins with rapid proliferation and differentiation into two cell types, the cytotrophoblast and the syncytiotrophoblast. The syncytiotrophoblast, a multinucleated mass of cells with no cell

boundaries, extends through the endometrial epithelium to penetrate the stroma. (C) The inner cell mass differentiates into the epiblast, which gives rise to the mesoderm and ectoderm, and the hypoblast, which gives rise to the endoderm. (D) The embryo becomes completely embedded 7–13 days after ovulation.



such as laminin, fibronectins, and collagen IV, in the uterine epithelium and decidua appears to be involved with these ligand–receptor complexes. After adhering to the uterine epithelium, the blastocyst will begin penetrating through the basement membrane and into the uterine stroma.

### Penetration of the epithelium

Immediately following adhesion, the blastocyst begins penetration into the endometrial epithelium and stroma (Fig. 1.5). For trophoblast cells to invade, they have to degrade and remodel the epithelium and stroma. Thus, embryos must produce specific molecules and other enzymes to assist in their penetration. A delicate coordination must exist, however, between the invading embryo and the underlying endometrium to prevent excessive penetration and yet provide adequate invasiveness.

The enzymes and molecules implicated in implantation include the proteases, proteinases, and their inhibitors, which are all involved with degradation of the extracellular matrix. There is a high degree of tissue reorganization that occurs during implantation. At present, the significance of these substances is not fully understood, although their importance in implantation is paramount. Clearly, further studies are needed to elucidate whether one or more of these systems are involved in embryo penetration or if they are redundant systems for “back up” in case one of the systems should become ineffective.

### The early human trophoblast

The blastocyst attaches to the endometrial epithelium at the embryonic pole 6 days after fertilization (Fig. 1.5). After the trophoblast has attached to the endometrial epithelium, rapid cellular proliferation occurs, and the trophoblast differentiates into two layers consisting of the inner cytotrophoblast and an outer syncytiotrophoblast, a multinucleated mass without cellular boundaries. Syncytial trophoblast processes extend through the endometrial epithelium to invade the endometrial stroma. Stromal cells surrounding the implantation site become laden with lipids and glycogen, become polyhedral in shape, and are referred to as decidual cells. These decidual cells degenerate in the region of the invading syncytiotrophoblast and provide nutrition to the developing embryo. The blastocyst superficially implants in the stratum compactum of the endometrium by the end of the first week. The trophoblast then invades the surrounding myometrium as the blastocyst becomes completely imbedded in the decidua. Capillary connections are formed as the trophoblast invades, and the blood supply to the developing fetus is established through which it will obtain its support until delivery occurs.

## Immunobiologic adaptations of pregnancy

The primary role of the immune system is to protect the body from invasion by foreign organisms and their toxic products. This requires an ability to discriminate between self and nonself antigens, so that immune destruction can be targeted against the invading organism and not against the animal’s own tissues. In pregnancy, the antigenically foreign fetus grows in its mother for 9 months, unharmed by her immune system. Clearly, immune adaptations must occur in pregnancy that are central to the survival of the fetus while maintaining the mother’s ability to fight infection.

## The maternal–fetal interface

### Trophoblast

The fetus itself does not come into direct contact with maternal tissue. The trophoblast of the placenta and fetal membranes forms the interface between mother and fetus. Two areas of contact between mother and fetus are established: (1) a large surface area formed by the syncytiotrophoblast of the chorionic villi that is bathed by maternal blood; and (2), within the deciduas, extravillous trophoblast (mostly cytotrophoblast but with some syncytial elements) that mingles directly with maternal tissues.

### Fetal–maternal cell traffic

The villous syncytiotrophoblast, adjacent to blood, and the nonvillous cytotrophoblast, in contact with maternal deciduas, are the main areas where maternal lymphocytes might be sensitized to trophoblasts. However, the interface between mother and fetus is extended by the traffic of fetal cells into the maternal circulation, carrying fetal antigens to other parts of the maternal immune system, where priming responses could also occur (Table 1.1).

### Trophoblast deportation

It has been known for many years that trophoblast cells enter the maternal circulation.<sup>38</sup> There are two ways in which this might happen. First, trophoblast “buds” (called syncytial sprouts) often form on the syncytiotrophoblast surface and

**Table 1.1** Contact between maternal and fetal tissues.

Local	Syncytiotrophoblast lining intervillous space Cytotrophoblast in decidua
Systemic	Fetal red and white cells entering maternal blood Trophoblast deportation

## CHAPTER 1

may break free and enter the maternal blood. This disruption of the syncytiotrophoblast could also lead to the underlying villous cytotrophoblast entering the mother's blood. Alternatively, the endovascular cytotrophoblast that lines the spiral arteries may be carried away into the bloodstream. There is evidence for both multinucleate (syncytiotrophoblast) and mononuclear (cytotrophoblast) cells entering the maternal uterine vein,<sup>39</sup> but it is not yet established whether the mononuclear cells are villous or extravillous cytotrophoblasts in origin. It is also a matter of great controversy whether trophoblasts enter the peripheral circulation to a major extent in pregnancy,<sup>40</sup> or whether they become trapped in the lungs.<sup>41</sup>

### Traffic of fetal blood cells

Direct contact of fetal (as opposed to placental) cells with maternal cells can come about only by the passage of fetal blood into the maternal circulation. There is now good evidence that fetal nucleated erythrocytes can enter the maternal blood in early pregnancy,<sup>42</sup> and it must be assumed that fetal leukocytes will enter at the same time.<sup>43</sup> Therefore, it appears that more cells traverse the placental barrier as the fetus and the placenta grow.<sup>44</sup> Their presence is presumed to result from fetal-maternal hemorrhage, although the mechanism by which this occurs has yet to be defined.

### Maternal immune cells in decidua

The decidua is the tissue in which immune recognition of trophoblasts is most likely to occur. Immunohistologic and flow cytometric studies of the first-trimester pregnancy decidua into which trophoblast invades have shown that it is composed predominantly of immune cells.<sup>45</sup> Approximately 10% of the stromal cells are T lymphocytes (although there are virtually no B cells) and 20% are macrophages;<sup>46</sup> these two cell types are essential for cell-mediated graft rejection responses. However, the main immune cell population is large granular lymphocytes or natural killer (NK) cells, comprising 45% of the decidual cells.<sup>47</sup> Immunohistologic studies show that the extravillous cytotrophoblast is in close contact with these immune cells, which raises the question as to how the trophoblast avoids recognition and rejection.

## Maternal immune responses to trophoblast

### Expression of major histocompatibility complex (MHC) antigens by trophoblast

The way in which the mother's immune system responds to trophoblast cells will depend on which, if any, MHC antigens they express; therefore, this has been an area of intense study. Studies using monoclonal antibodies that recognized all forms of class I antigens [human leukocyte antigen (HLA)-A, -B, and

**Table 1.2** MHC expression in human development.

	Class I MHC		Class II MHC
	HLA-G	HLA-A, -B, -C	HLA-DR, -DP, -DQ
Oocyte	-	-	-
Sperm	-	-	-
Blastocyst	+	?	?
Syncytiotrophoblast	-	-	-
Villous cytotrophoblast	-	-	-
Extravillous cytotrophoblast	+	-	-
Fetal tissue	-	+	+

MHC, major histocompatibility complex; -, antigen absent; +, antigen present; ?, not yet known.

-C] revealed that, although the syncytiotrophoblast and underlying villous cytotrophoblast were negative for class I, the invasive extravillous cytotrophoblast in the placental bed and the amniochorion strongly expressed this antigen.<sup>48</sup> Subsequent biochemical<sup>49,50</sup> and molecular analyses<sup>51</sup> have shown that the trophoblast class I antigen is in fact HLA-G. HLA-G differs from HLA-A, -B, and -C in that it is nonpolymorphic and has a lower molecular weight. The latter characteristic arises from a termination codon in exon 6, resulting in the transcription of a protein with a truncated cytoplasmic tail.<sup>52</sup>

Polyclonal antibody studies have confirmed that HLA-G protein is expressed only by extravillous cytotrophoblast<sup>53</sup> (Table 1.2). Neither oocytes<sup>54</sup> nor sperm express surface class I or class II antigens, although sperm are reported to express mRNA for both HLA-B and -G.<sup>55</sup> Similarly, oocytes appear to be negative for both class I and class II antigens. Cleavage-stage embryos and blastocysts were also thought to be negative for class I,<sup>56</sup> but there is no evidence that a proportion of blastocysts express both HLA-G mRNA and protein, which may be associated with more rapid cleavage rates.<sup>57</sup> Thus, expression of HLA-G at this stage could be vital to protect the embryo as it implants into the decidua.

### Immunoregulatory role of HLA-G

Soluble class I HLA molecules are known to be shed into the serum of patients with HLA-mismatched organ grafts.<sup>58</sup> These donor-derived, soluble, class I antigens are believed to prolong graft survival by inhibiting the activity of alloreactive cytotoxic lymphocytes.<sup>59</sup> This may occur through their binding to the T-cell receptor or its coreceptor, CD8, which induces apoptosis of the cytotoxic T cell.<sup>60</sup> It has been proposed that soluble HLA-G may likewise be shed from the surface of the trophoblast and may eliminate maternal cytotoxic T cells by a similar mechanism.<sup>61</sup> In support of the hypothesis, evidence for a soluble HLA-G molecule has been obtained at both the

**Table 1.3** Properties and functions of HLA-G.

---

Protein expression restricted to extravillous cytotrophoblast
Exists in both membrane-bound and soluble forms
Heavy chain (40-kDa) has truncated cytoplasmic tail
May have limited polymorphism or is nonpolymorphic
Forms class I complexes with $\beta_2$ -microglobulin and antigenic peptides
Expression is associated with TAP1
Appears not to stimulate maternal T-cell responses
Downregulates NK cell-mediated cytotoxicity

---

NK cell, natural killer cell; TAP1, transporter associated with peptide presentation.

molecular<sup>62</sup> and the protein level,<sup>50</sup> and other studies have shown that HLA-G binds to CD8.<sup>63</sup>

HLA-G expression may also serve a protective role for trophoblasts. HLA-G inhibits the proliferation of CD4+ T lymphocytes<sup>64</sup> and decreases decidual cell production of interferon (IFN)- $\gamma$  and tumor necrosis factor (TNF)- $\alpha$ .<sup>65</sup> Addition of HLA-G to mixed lymphocyte cultures increases the production of IL-10 and decreases IFN- $\gamma$  and TNF- $\alpha$  production causing a shift from a Th1 to a Th2 phenotype.<sup>66</sup>

### Protection against NK cell attack

It might seem that, in evolutionary terms, it would be simpler for the trophoblast not to express class I MHC and thereby avoid immune recognition. However, a major threat to trophoblast invading the decidua is presented by the large granular lymphocytes (NK cells). NK cells preferentially kill target cells that lack class I MHC. The presence of class I antigens on the cell surface is thought to be essential for protection from NK cell-mediated attack. Experiments using cell lines have shown that variants with low levels of class I expression are highly susceptible to NK lysis,<sup>67</sup> but that transfection with both classical class I and HLA-G genes can confer protection.<sup>61,68</sup> The expression of HLA-G may therefore be essential to protect extravillous cytotrophoblast from decidual NK cells.<sup>69,70</sup> Thus, HLA-G may serve a dual role in protecting trophoblast from both cytotoxic T cells and NK cells.

The properties and possible functions of HLA-G are summarized in Table 1.3.

## Maternal immune responses to trafficking cells

### Fetal leukocytes

In the placenta, class I antigen expression occurs in the mesenchyme of the chorionic villi as early as 2.5 weeks, although it is sporadic and weak. Class II-positive cells are found in the placenta by 14 weeks' gestation.<sup>71</sup> In the fetus itself, class

I- and class II-positive cells have been found in the thymic epithelium at 7 weeks' gestation.<sup>72</sup> Thus, if fetal leukocytes enter the maternal circulation, they could potentially stimulate maternal immune responses.

### Antibody responses

Antifetal (paternal) HLA alloantibodies can develop during a first pregnancy,<sup>73</sup> and may occur after an abortion,<sup>74</sup> which indicates that immunization is not necessarily the result of events at delivery, but usually develops after 28 weeks, with the incidence increasing with parity.<sup>75</sup> These antibodies do not develop in all pregnancies. The rate is approximately 15% of women in their first pregnancies and never more than approximately 60% among multiparous women.<sup>76</sup> Antibodies may develop against both class I and class II antigens.<sup>77</sup>

None of these antifetal antibodies appears to cause harm to the fetus, probably because they cannot bind to the syncytiotrophoblast, given that it does not express MHC antigens. This would be sufficient protection were it not for the placenta's role in the transfer of immunoglobulins from the maternal to the fetal circulation – a process by which the fetus acquires immunity from infection in the perinatal period. Fc receptors on the surface of the syncytiotrophoblast bind free immunoglobulin G (IgG) molecules and transport them to the villous stroma, where they enter the fetal circulation. Only IgG is transported; antibodies of other classes remain in the maternal blood. However, antibodies to fetal (paternal) HLA appear to be effectively filtered out by binding HLA antigens on cells in the villous stroma. IgG that is aggregated or complexed with antigen is removed by Fc receptor-bearing macrophages.<sup>78</sup> This illustrates the concept of the placental “sponge.” Thus, only maternal IgG antibodies to antigens not represented in placental tissues escape the “sponge” and reach the fetal circulation.<sup>79</sup>

### Cell-mediated responses

If the mother can develop antibodies to fetal HLA antigens, it would be expected that she can also develop cell-mediated immunity because T- and B-cell sensitization to fetal HLA should occur together. It is therefore surprising that there is only sporadic evidence for T-cell sensitization, as judged by the detection of a secondary maternal–paternal (fetal) mixed lymphocyte reaction or paternal (fetal)-specific cytotoxic T cells.<sup>80</sup>

A search for maternal cytotoxic T cells against paternal and unrelated control target cells at term found clear evidence for their presence in only 2 of 20 pregnant women.<sup>81</sup> In a further series of experiments, no sensitization to paternal HLA was seen in 25 normal first-trimester pregnancies.<sup>82</sup> Even when cytotoxic T cells were found, they did not appear to harm the fetus because these women had normal pregnancies. This implies that cytotoxic T cells cannot cross the placental barrier to gain access to the fetus.

## CHAPTER 1

**Table 1.4** Maternal immune responses to fetal cells.

	Antibody response	Cell-mediated response
Fetal leukocytes	+	+/-
Trophoblast	+/- (?)	-

+, response; -, no response; (?), conflicting evidence.

## Immunoregulation

From the discussion above, it is clear that there is a paradox in pregnancy in that, although the mother's ability to produce antibodies is apparently normal, her ability to mount cell-mediated immune responses is weakened (Table 1.4). This concept is supported by clinical observations that pregnant women, although not grossly immunocompromised, are more susceptible to diseases that are normally dealt with by cell-mediated immune responses. Certain viral infections, such as hepatitis, herpes simplex, and Epstein-Barr virus, are more common in pregnancy.<sup>83</sup> Diseases caused by intracellular pathogens (e.g., leprosy, tuberculosis, malaria, toxoplasmosis, and coccidioidomycosis) appear to be exacerbated by pregnancy. Furthermore, approximately 70% of women with rheumatoid arthritis (caused by cytotoxic T cells in the joints) experience a temporary remission of their symptoms during gestation, whereas systemic lupus erythematosus (caused by autoantibodies) tends to get worse during pregnancy.<sup>84</sup>

Many investigators have attempted to characterize the maternal immune response by determining immune cell subsets and immune cell function during pregnancy. In general, immune function is similar in pregnant and nonpregnant women (Table 1.5). Taken together, there is no clear trend toward either the enhancement or the suppression of immune function during pregnancy.

### Immunoregulatory factors

#### Placental suppressor factors

The placenta itself can release factors that suppress T-cell and NK-cell activity.<sup>85</sup> Microvillous preparations of syncytiotrophoblast and culture supernatants from placental cells and choriocarcinoma cell lines<sup>86,87</sup> nonspecifically suppress mitogen responsiveness and allogeneically stimulated lymphocytes in the mixed lymphocyte reaction along with the cytolytic activity of cytotoxic T cells and NK-cell activity.<sup>88</sup> Suppressive activity may appear very early in gestation, given that animal<sup>89</sup> and human preimplantation embryos have been reported to produce inhibitory factors within 24 hours of fertilization.<sup>90</sup>

**Table 1.5** Alterations in maternal cellular immunity during pregnancy.

Component	Alteration in pregnancy	Reference
B-cell numbers	No change	102, 103
T-cell numbers	No change	104, 105, 106
T-cell function	No change Decreased	107 108, 109
NK-cell function	Decreased	110, 111

#### Decidual suppressor factors

Suppressive factors released by the placenta into the blood may inhibit lymphocyte responses systematically, but other mechanisms may be involved locally to prevent alloimmune recognition of extravillous cytotrophoblast that invades the decidua. Suppression of cell-mediated responsiveness *in vitro* by cell populations<sup>91</sup> from first-trimester human decidua has also been demonstrated. Decidual cells secrete various proteins that might mediate these suppressive activities. Transforming growth factor  $\beta$ , a cytokine that strongly inhibits proliferation of B cells and T cells and the cytolytic activity of NK cells, has been localized to the large granular lymphocytes in the human decidua.<sup>92</sup>

#### Cytokines and pregnancy

The strongest candidates for the suppressor factors derived from the placenta and decidua are cytokines. It has been proposed that the maternal immune changes in pregnancy are brought about by a shift in the balance of cytokines that favors antibody production and depresses the potentially harmful cell-mediated immune responses.

#### Type 1 and type 2 cytokines and the immune response

It has become apparent that antibody production and cell-mediated responses are controlled through two distinct populations of CD4+ Th cells.<sup>93</sup> Type 1 CD4+ Th cells (Th1) control cell-mediated responses by secreting cytokines such as IL-2, TFN- $\beta$ , and IFN- $\gamma$ , which stimulate cytotoxic T cells and NK cells (Th1 response). Type 2 CD4+ Th cells (Th2) produce IL-4, which stimulates IgE and IgG antibody production by B cells (Th2 response) (Fig. 1.6A). These two systems are also interactive in that IFN- $\gamma$  produced by T1 cells inhibits B-cell development induced by Th2 cells, and Th2 cells in turn produce IL-10, which inhibits cytokine synthesis by Th1 cells (Fig. 1.6B). Thus, Th1 and Th2 cytokines are mutually inhibitory but, in the normal state, they are in balance, allowing both forms of immune response to coexist. However, a deviation in the pattern of cytokine production could lead to one type of response being favored over the other.

## EARLY CONCEPTUS GROWTH AND IMMUNOBIOLOGIC ADAPTATIONS OF PREGNANCY

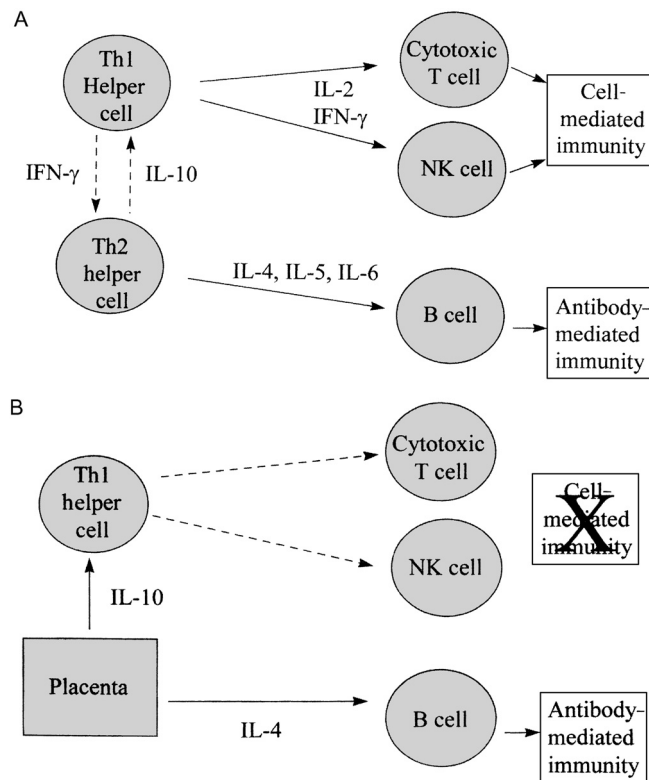


Figure 1.6 (A) Th1 and Th2 cytokines in immune responses. (B) Th1 and Th2 cytokines in pregnancy. IFN, interferon; IL, interleukin; NK, natural killer; Th1, type 1 T helper cells; Th2, type 2 T helper cells.

### Type 1 and type 2 cytokines in pregnancy

In pregnancy, it is proposed that there is a shift away from Th1 responses and toward Th2 responses.<sup>94</sup> The cause of this shift is thought to be the production of Th2 cytokines by the placenta (Fig. 1.6B). Thus, excess IL-4 released from the placenta would stimulate maternal antibody responses. At the same time, excess IL-10 production would inhibit Th1 cells,

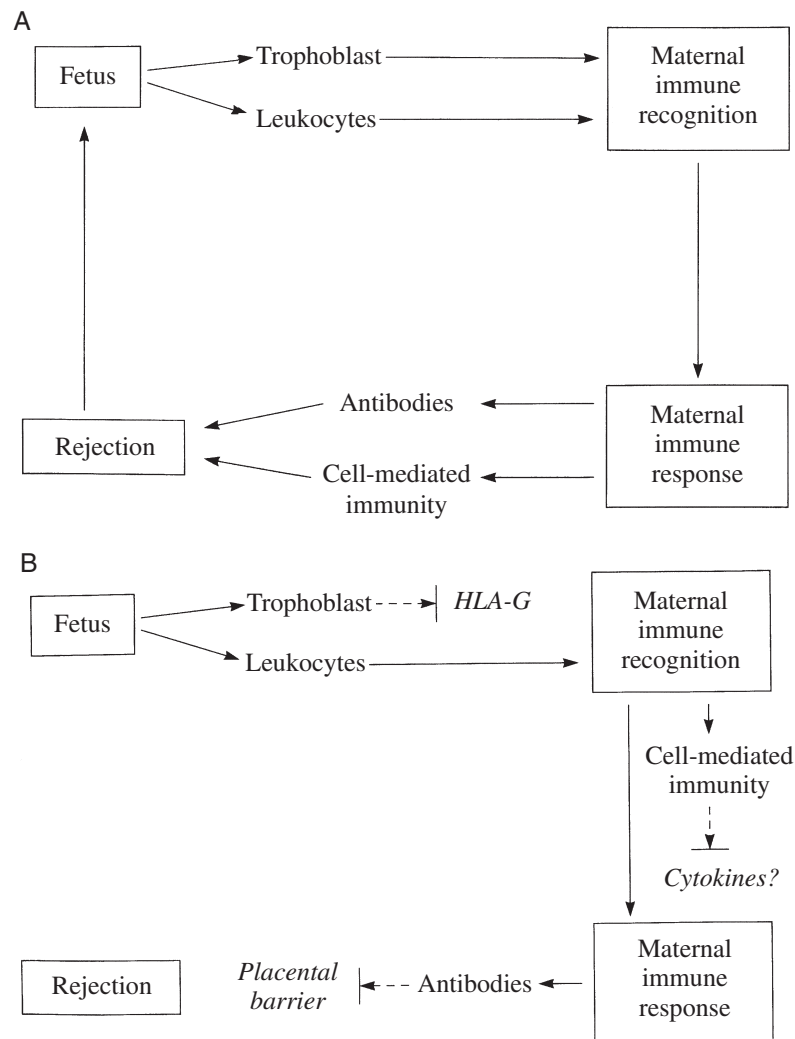
leading to the suppression of cytotoxic T cells and NK-cell activity, which has been observed.

Experimental evidence for this hypothesis is largely confined to the mouse. Several groups have demonstrated that production of Th2 cytokines by tissues at the maternal–fetal interface<sup>95,96</sup> and injection of Th1 cytokines TNF- $\alpha$ , IFN- $\gamma$ , and IL-2 into pregnant mice can increase fetal resorption rates and inhibit mouse embryo development and implantation *in vitro*.<sup>97</sup> So far, evidence in the human is restricted to localization studies showing that IL-4 is present in the syncytiotrophoblast, the cytotrophoblast of the fetal membranes, and decidual macrophages,<sup>98</sup> and that IL-10 is secreted by HLA-G-positive cytotrophoblast.<sup>99</sup> In contrast, IL-10 knockout mice<sup>100</sup> and IL-10, IL-4 double knockouts<sup>101</sup> have normal pregnancies. Thus, the immunologic relationship between mother and fetus may be more complex than originally thought.

### Immune circuit

It is clear from the foregoing discussion that, in normal pregnancy, fetal growth progresses side by side with the development of a number of immune mechanisms that function at several levels. These can be summarized by constructing an immune circuit (Fig. 1.7A). The first stage in this circuit is the exposure of the maternal immune system to both fetal trophoblast and leukocytes. This could potentially lead to immune recognition and the development of cell-mediated and antibody responses to fetal antigens, which in turn would lead to rejection of the fetus (placenta). However, this circuit is broken at several stages (Fig. 1.7B). First, on the basis of current evidence, the maternal immune system does not recognize the trophoblast because it either fails to express HLA or expresses HLA-G. Second, although fetal leukocytes can be recognized by maternal immune cells, only antibody responses occur because the placenta's production of Th2 cytokines downregulates cell-mediated immunity. Finally, the production of antipaternal antibodies is not harmful because the placenta filters out these antibodies before they reach the fetal circulation. Thus, it is the combination of these many immune adaptations of pregnancy that ensure the success of the fetus.

## CHAPTER 1



**Figure 1.7** (A) Immune responses in pregnancy that could lead to rejection of the fetus. (B) Immuno-regulatory mechanisms in pregnancy that prevent the rejection of the fetus.

### Key points

- 1 During meiosis, the primary oocyte gives rise to four daughter cells, each receiving 22 autosomes and an X chromosome. The primary spermatocyte also gives rise to four daughter cells, each receiving 22 autosomes and either an X or a Y chromosome.
- 2 Prior to sperm-egg interaction, capacitation of the spermatozoa must occur.
- 3 Capacitation is characterized by the acrosome reaction, fusion between the sperm's plasma and acrosomal membrane with exocytosis of the enzyme contents.
- 4 The zona pellucida is an acellular glycoprotein coat covering the ovum and consists of three principal proteins: ZP1, ZP2, and ZP3.
- 5 Upon fusion of the egg and sperm membranes, the cortical and zona reactions are triggered.
- 6 After egg-sperm fusion, the oocyte will resume the second meiotic division and extrude the second polar body.
- 7 The morula enters the uterus 3 days after fertilization and floats inside the endometrial cavity for 2-3 days. The embryo begins implantation approximately 6 days after fertilization.
- 8 Human chorionic gonadotrophin is a glycoprotein produced by the early conceptus and is essential in stimulating the corpus luteum to produce progesterone.
- 9 Three cytokines appear to be involved in implantation, colony-stimulating factor 1, leukemia inhibitory factor, and interleukin 1.
- 10 The adherence of the blastocyst to the endometrial epithelium is mediated through ligand-receptor complexes.

- 11 HLA-G protein is expressed only by extravillous cytotrophoblast.
- 12 Fetal nucleated erythrocytes and leukocytes can enter the maternal blood in early pregnancy.
- 13 First-trimester pregnancy decidua is composed predominantly of immune cells. Approximately 10% of the stromal cells are T lymphocytes, 20% are macrophages, and the main immune cell population is large granular lymphocytes or NK cells, comprising 45% of the decidual cells.
- 14 HLA-G inhibits the proliferation of CD4+ T lymphocytes and decreases decidual cell production of IFN- $\gamma$  and TNF- $\alpha$ .
- 15 HLA-G may serve a dual role in protecting trophoblast from both cytotoxic T cells and NK cells.
- 16 In the placenta, class I antigen expression occurs in the mesenchyme of the chorionic villi as early as 2.5 weeks; class II-positive cells are found in the placenta by 14 weeks' gestation.
- 17 There is no clear trend toward either the enhancement or the suppression of immune function during pregnancy.
- 18 The placenta can release factors that suppress T-cell and NK-cell activity.
- 19 Type 1 CD4+ Th cells (Th1) control cell-mediated responses by secreting cytokines such as IL-2, TFN- $\beta$ , and IFN- $\gamma$ , which stimulate cytotoxic T cells and NK cells (Th1 response).
- 20 Type 2 CD4+ Th cells (Th2) produce IL-4, which stimulates IgE and IgG antibody production by B cells (Th2 response).

## References

- 1 Knobil E, Neill JD, eds. *The physiology of reproduction*, 2nd edn. New York: Raven Press, 1994.
- 2 Adashi EY, Rock JA, Rosenwaks Z, eds. *Reproductive endocrinology, surgery and technology*. Philadelphia, PA: Lippincott-Raven, 1996.
- 3 Yoshinaga K, Hess DL, Hendrickx AG, et al. The development of the sexually indifferent gonad in the prosimian, *Galago crassicaudatus crassicaudatus*. *Am J Anat* 1988;181:89-105.
- 4 Austin CR. The capacitation of the mammalian sperm. *Nature* 1952;190:326.
- 5 Yanagimachi R. Mammalian fertilization. In: Knobil E, Neill JD, eds. *The physiology of reproduction*. New York: Raven Press; 1994:189-317.
- 6 Bedford JM. Significance of the need for sperm capacitation before fertilization in eutherian mammals. *Biol Reprod* 1983;28:108-120.
- 7 Austin CR. Capacitation and the release of hyaluronidase from spermatozoa. *J Reprod Fertil* 1960;3:310-311.
- 8 Saling PM. Fertilization: mammalian gamete interactions. In: Adashi EY, Rock JA, Rosenwaks Z, eds. *Reproductive endocrinology, surgery and technology*. Philadelphia, PA: Lippincott-Raven; 1996:404-420.
- 9 Liang LF, Dean J. Oocyte development: molecular biology of the zona pellucida. *Vitam Horm* 1993;158:35-45.
- 10 Wassarman PM, Albertini DF. The mammalian ovum. In: Knobil E, Neill J, eds. *The physiology of reproduction*. New York: Raven Press; 1994:69-102.
- 11 Wassarman PM. Zona pellucida glycoproteins. *Annu Rev Biochem* 1988;57:415-442.
- 12 Wassarman PM. Gamete interactions during mammalian fertilization. *Theriogenology* 1994;41:31-44.
- 13 Foltz KR. Sperm-binding proteins. *Int Rev Cytol* 1995;163:249-303.
- 14 Yanagimachi R. Sperm-egg fusion. In: Duzgunes N, Bronner F, eds. *Current topics in membranes and transport*. San Diego, CA: Academic Press; 1988:3-43.
- 15 Green DP. Mammalian fertilization as a biological machine: a working model for adhesion and fusion of sperm and oocyte. *Hum Reprod* 1993;8:91-96.
- 16 Miyazaki S, Shirakawa H, Nakada K, et al. Essential role of the inositol 1,4,5 triphosphate receptor/Ca<sup>2+</sup> release channel in Ca<sup>2+</sup> waves and oscillations at fertilization of mammalian eggs. *Dev Biol* 1993;158:62-78.
- 17 Taylor CT, Lawrence YM, Kingsland CR, et al. Oscillations in intracellular free calcium induced by spermatozoa in human oocytes at fertilization. *Hum Reprod* 1993;8:2174-2179.
- 18 Dale B, Gualtieri R, Talevi R, et al. Intercellular communication in the early human embryo. *Mol Reprod Dev* 1991;29:22-28.
- 19 Lo CW. The role of gap junction membrane channels in development. *J Bioenerg Biomembr* 1996;28:379-385.
- 20 Larue L, Mami O, Hirchenhain J, et al. E-cadherin null mutant embryos fail to form a trophectoderm epithelium. *Proc Natl Acad Sci USA* 1994;91:188-195.
- 21 Perona RM, Wassarman PM. Mouse blastocysts hatch *in vitro* by using a trypsin-like proteinase associated with cells of mural trophectoderm. *Dev Biol* 1986;114:42-52.
- 22 Sathananthan H. Ultrastructure of preimplantation human embryos co-cultured with human ampullary cells. *Hum Reprod* 1990;5:309-318.
- 23 Minhas BS, Ripps BA, Zhu YP, et al. Platelet activating factor and conception. *Am J Reprod Immunol* 1996;35:267-271.
- 24 O'Neill C, Gidley-Baird AA, Pike IL, et al. Maternal blood platelet physiology and luteal phase endocrinology as a means of monitoring pre- and post-implantation embryo viability following *in vitro* fertilization. *J In Vitro Embryo Transfer* 1985;2:87-93.
- 25 Spinks NR, O'Neill C. Embryo-derived platelet-activating factor is essential for establishment of pregnancy in the mouse. *Lancet* 1987;1:106-107.
- 26 Lenton EA. Gonadotrophins of the menstrual cycle and implantation. *Serono Symp Publ* 1990;66:33-48.
- 27 Dokras A, Sargent IL, Gardner RL, et al. Human trophectoderm biopsy and secretion of chorionic gonadotrophin. *Hum Reprod* 1991;6:1453-1459.
- 28 Morton H, Rolfe B, Clunie GJA, et al. An early pregnancy factor detected in human serum by the rosette inhibition test. *Lancet* 1977;1:394-397.
- 29 Bose R, Cheung H, Sabbadini E, et al. Purified human early pregnancy factor from preimplantation embryo possesses immunosuppressive factors. *Am J Obstet Gynecol* 1989;160:954-960.

## CHAPTER 1

- 30 Cavanagh AC, Morton H. The purification of early-pregnancy factor to homogeneity from human platelets and identification as chaperonin 10. *Eur J Biochem* 1994;222:551-560.
- 31 Straube W, Romer T, Zeeni L, et al. The early pregnancy factor (EPF) as an early marker of disorders in pregnancy. *Zentralbl Gynakol* 1995;117:32-34.
- 32 Sheth KV, Roca GL, Al Sediary ST, et al. Prediction of successful embryo implantation by measuring interleukin-1 $\alpha$  and immunosuppressive factor(s) in preimplantation embryo culture fluid. *Fertil Steril* 1991;55:952-957.
- 33 Bose R, Lacson AG. Embryo-associated immunosuppressor factor is produced at the maternal-fetal interface in human pregnancy. *Am J Reprod Immunol* 1995;33:373-380.
- 34 Cocchiara R, Di Trapani G, Azzolina A, et al. Identification of a histamine-releasing factor secreted by human pre-implantation embryos grown *in vitro*. *J Reprod Immunol* 1988;13:41-52.
- 35 Harvey MB, Leco KJ, Arcellana-Panlilio MY, et al. Roles of growth factors during peri-implantation development. *Hum Reprod* 1995:712-718.
- 36 Tabibzadeh S, Babaknia A. The signals and molecular pathways involved in implantation, a symbiotic interaction between blastocyst and endometrium involving adhesion and tissue invasion. *Hum Reprod* 1995:1579-1602.
- 37 Simon C. Potential molecular mechanisms for the contraceptive control of implantation. *Mol Hum Reprod* 1996;2(7):475-479.
- 38 Thomas L, Douglas GW, Carr MC. The continual migration of syncytial trophoblasts from the fetal placenta into the maternal circulation. *Trans Assoc Am Physiol* 1959;72:140-148.
- 39 Chua S, Wilkins T, Sargent I, et al. Trophoblast deportation in pre-eclamptic pregnancy. *Br J Obstet Gynaecol* 1991;98(10):973-979.
- 40 Mueller UW, Hawes CS, Wright AE, et al. Isolation of fetal trophoblast cells from peripheral blood of pregnant women. *Lancet* 1990;336(8709):197-200.
- 41 Sargent IL, Johansen M, Chua S, et al. Clinical experience: isolating trophoblasts from maternal blood. *Ann NY Acad Sci* 1994;731:154-161.
- 42 Bianchi DW, Zickwolf GK, Yih MC, et al. Erythroid-specific antibodies enhance detection of fetal nucleated erythrocytes in maternal blood. *Prenat Diagn* 1993;13(4):293-300.
- 43 Zilliacus R, De la Chapelle A, Schroder J, et al. Transplacental passage of foetal blood cells. *Scand J Haematol* 1975;15(5):333-338.
- 44 Hamada H, Arinami T, Kubo T, et al. Fetal nucleated cells in maternal peripheral blood: frequency and relationship to gestational age. *Hum Genet* 1993;91(5):427-432.
- 45 Bulmer JN, Sunderland CA. Bone-marrow origin of endometrial granulocytes in the early human placental bed. *J Reprod Immunol* 1983;5(6):383-387.
- 46 Starkey PM, Sargent IL, Redman CW. Cell populations in human early pregnancy decidua: characterization and isolation of large granular lymphocytes by flow cytometry. *Immunology* 1988;65(1):129-134.
- 47 Giacomini P, Tosi S, Murgia C, et al. First-trimester human trophoblast is class II major histocompatibility complex mRNA+/antigen. *Hum Immunol* 1994;39(4):281-289.
- 48 Sunderland CA, Naiem M, Mason DY, et al. The expression of major histocompatibility antigens by human chorionic villi. *J Reprod Immunol* 1981;3(6):323-331.
- 49 Ellis SA, Sargent IL, Redman CW, et al. Evidence for a novel HLA antigen found on human extravillous trophoblast and a choriocarcinoma cell line. *Immunology* 1986;59(4):595-601.
- 50 Kovats S, Main EK, Librach C, et al. A class I antigen, HLA-G, expressed in human trophoblasts. *Science* 1990;248(4952):220-223.
- 51 Ellis SA, Palmer MS, McMichael AJ. Human trophoblast and the choriocarcinoma cell line BeWo express a truncated HLA Class I molecule. *J Immunol* 1990;144(2):731-735.
- 52 Geraghty DE, Koller BH, Orr HT. A human major histocompatibility complex class I gene that encodes a protein with a shortened cytoplasmic segment. *Proc Natl Acad Sci USA* 1987;84(24):9145-9149.
- 53 Chumbley G, King A, Gardner L, et al. Generation of an antibody to HLA-G in transgenic mice and demonstration of the tissue reactivity of this antibody. *J Reprod Immunol* 1994;27(3):173-186.
- 54 Dohr G. HLA and TLX antigen expression on the human oocyte, zona pellucida and granulosa cells. *Hum Reprod* 1987;2(8):657-664.
- 55 Chiang MH, Steuerwald N, Lambert H, et al. Detection of human leukocyte antigen class I messenger ribonucleic acid transcripts in human spermatozoa via reverse transcription-polymerase chain reaction. *Fertil Steril* 1994;61(2):276-280.
- 56 Roberts JM, Taylor CT, Melling GC, et al. Expression of the CD46 antigen, and absence of class I MHC antigen, on the human oocyte and preimplantation blastocyst. *Immunology* 1992;75(1):202-205.
- 57 Jurisicova A, Casper RF, MacLusky NJ, et al. HLA-G expression during preimplantation human embryo development. *Proc Natl Acad Sci USA* 1996;93(1):161-165.
- 58 Puppo F, Scudeletti M, Indiveri F, et al. Serum HLA class I antigens: markers and modulators of an immune response? *Immunol Today* 1995;16(3):124-127.
- 59 Hausmann R, Zavazava N, Steinmann J, et al. Interaction of papain-digested HLA class I molecules with human alloreactive cytotoxic T lymphocytes (CTL). *Clin Exp Immunol* 1993;91(1):183-188.
- 60 Zavazava N, Kronke M. Soluble HLA class I molecules induce apoptosis in alloreactive cytotoxic T lymphocytes. *Nature Med* 1996;2(9):1005-1010.
- 61 Kovats S, Librach C, Fisch P, et al. Expression and possible function of the HLA-G a chain in human cytotrophoblasts. In: Chaouat G, Mowbray J, eds. *Cellular and molecular biology of the materno-fetal relationship*. Paris: John Libbey; 1991:21-29.
- 62 Ishitani A, Geraghty DE. Alternative splicing of HLA-G transcripts yields proteins with primary structures resembling both class I and class II antigens. *Proc Natl Acad Sci USA* 1992;89(9):3947-3951.
- 63 Sanders SK, Giblin PA, Kavathas P. Cell-cell adhesion mediated by CD8 and human histocompatibility leukocyte antigen G, a nonclassical major histocompatibility complex class I molecule on cytotrophoblasts. *J Exp Med* 1991;174(3):737-740.
- 64 Bainbridge DR, Ellis SA, Sargent IL. HLA-G suppresses proliferation of CD4(+) T-lymphocytes. *J Reprod Immunol* 2000;48(1):17-26.
- 65 Kanai T, Fujii T, Unno N, et al. Human leukocyte antigen-G-expressing cells differently modulate the release of cytokines from mononuclear cells present in the decidua versus peripheral blood. *Am J Reprod Immunol* 2001;45(2):94-99.
- 66 Kapasi K, Albert SE, Yie S, et al. HLA-G has a concentration-dependent effect on the generation of an allo-CTL response. *Immunology* 2000;101(2):191-200.
- 67 Harel-Bellan A, Quillet A, Marchiol C, et al. Natural killer susceptibility of human cells may be regulated by genes in the HLA



## EARLY CONCEPTUS GROWTH AND IMMUNOBIOLOGIC ADAPTATIONS OF PREGNANCY

- region on chromosome 6. *Proc Natl Acad Sci USA* 1986;83(15):5688-5692.
- 68 Pazmany L, Mandelboim O, Vales-Gomez M, et al. Protection from natural killer cell-mediated lysis by HLA-G expression on target cells. *Science* 1996;274(5288):792-795.
- 69 Riteau B, Rouas-Freiss N, Menier C, et al. HLA-G2, -G3, and -G4 isoforms expressed as nonmature cell surface glycoproteins inhibit NK and antigen-specific CTL cytotoxicity. *J Immunol* 2001;166(8):5018-5026.
- 70 Rieger L, Hofmeister V, Probe C, et al. Th1- and Th2-like cytokine production by first trimester decidual large granular lymphocytes is influenced by HLA-G and HLA-E. *Mol Hum Reprod* 2002;8(3):255-261.
- 71 Sutton L, Mason DY, Redman CW. HLA-DR positive cells in the human placenta. *Immunology* 1983;49(1):103-112.
- 72 Haynes BF, Scearce RM, Lobach DF, et al. Phenotypic characterization and ontogeny of mesodermal-derived and endocrine epithelial components of the human thymic microenvironment. *J Exp Med* 1984;159(4):1149-1168.
- 73 Van der Werf AJM. Are lymphocytotoxic iso-antibodies produced by the early human trophoblast? *Lancet* 1971(1):95.
- 74 Nakajima H, Mano Y, Tokunaga E, et al. Influence of previous pregnancy on maternal response to foetal antigens. *Tissue Antigens* 1982;19(1):92-94.
- 75 Regan L, Braude PR. Is antipaternal cytotoxic antibody a valid marker in the management of recurrent abortion? *Lancet* 1987;2(8570):1280.
- 76 Van Rood GG, Eernisse G, Van Leuween A. Leukocyte antibodies in sera from pregnant women. *Nature* 1958(181):1735-1736.
- 77 Borelli I, Amoroso A, Richiardi P, et al. Evaluation of different technical approaches for the research of human anti-Ia alloantiser. *Tissue Antigens* 1982;19(5):380-387.
- 78 Wood GW, Bjerrum K, Johnson B. Detection of IgG bound within human trophoblast. *J Immunol* 1982;129(4):1479-1484.
- 79 Tongio MM, Mayer S, Lebec A. Transfer of HL-A antibodies from the mother to the child. Complement of information. *Transplantation* 1975;20(2):163-166.
- 80 Sargent IL. Maternal and fetal immune responses during pregnancy. *Exp Clin Immunogenet* 1993;10(2):85-102.
- 81 Sargent IL, Arenas J, Redman CW. Maternal cell-mediated sensitisation to paternal HLA may occur, but is not a regular event in normal human pregnancy. *J Reprod Immunol* 1987;10(2):111-120.
- 82 Sargent IL, Wilkins T, Redman CW. Maternal immune responses to the fetus in early pregnancy and recurrent miscarriage. *Lancet* 1988;2(8620):1099-104.
- 83 Larsen B, Galask RP. Host-parasite interactions during pregnancy. *Obstet Gynecol Surv* 1978;33(5):297-318.
- 84 Piccinni MP, Romagnani S. Regulation of fetal allograft survival by a hormone-controlled Th1- and Th2-type cytokines. *Immunol Res* 1996;15(2):141-150.
- 85 Menu E, Kaplan L, Andreu G, et al. Immunoactive products of human placenta. I. An immunoregulatory factor obtained from explant cultures of human placenta inhibits CTL generation and cytotoxic effector activity. *Cell Immunol* 1989;119(2):341-352.
- 86 Matsuzaki N, Okada T, Kameda T, et al. Trophoblast-derived immunoregulatory factor: demonstration of the biological function and the physicochemical characteristics of the factor derived from choriocarcinoma cell lines. *Am J Reprod Immunol* 1989;19(4):121-127.
- 87 Arkwright PD, Rademacher TW, Boutignon F, et al. Suppression of allogeneic reactivity *in vitro* by the syncytiotrophoblast membrane glycocalyx of the human term placenta is carbohydrate dependent. *Glycobiology* 1994;4(1):39-47.
- 88 Degenne D, Khalifoun B, Bardos P. *In vitro* inhibitory effect of human syncytiotrophoblast plasma membranes on the cytolytic activities of CTL and NK cells. *Am J Reprod Immunol Microbiol* 1986;12(4):106-110.
- 89 Murray MK, Segerson EC, Hansen PJ, et al. Suppression of lymphocyte activation by a high-molecular-weight glycoprotein released from preimplantation ovine and porcine conceptuses. *Am J Reprod Immunol Microbiol* 1987;14(2):38-44.
- 90 Clark DA, Lee S, Fishell S, et al. Immunosuppressive activity in human *in vitro* fertilization (IVF) culture supernatants and prediction of the outcome of embryo transfer: a multicenter trial. *J In Vitro Fertil Embryo Transf* 1989;6(1):51-58.
- 91 Daya S, Clark DA, Devlin C, et al. Suppressor cells in human decidua. *Am J Obstet Gynecol* 1985;151(2):267-270.
- 92 Clark DA, Vince G, Flanders KC, et al. CD56+ lymphoid cells in human first trimester pregnancy decidua as a source of novel transforming growth factor-beta 2-related immunosuppressive factors. *Hum Reprod* 1994;9(12):2270-2277.
- 93 Mosmann TR, Coffman RL. TH1 and TH2 cells: different patterns of lymphokine secretion lead to different functional properties. *Annu Rev Immunol* 1989;7:145-173.
- 94 Wegmann TG, Lin H, Guilbert L, et al. Bidirectional cytokine interactions in the maternal-fetal relationship: is successful pregnancy a TH2 phenomenon? *Immunol Today* 1993;14(7):353-356.
- 95 Lin H, Mosmann TR, Guilbert L, et al. Synthesis of T helper 2-type cytokines at the maternal-fetal interface. *J Immunol* 1993;151(9):4562-4573.
- 96 Delassus S, Coutinho GC, Saucier C, et al. Differential cytokine expression in maternal blood and placenta during murine gestation. *J Immunol* 1994;152(5):2411-2420.
- 97 Haimovici F, Hill JA, Anderson DJ. The effects of soluble products of activated lymphocytes and macrophages on blastocyst implantation events *in vitro*. *Biol Reprod* 1991;44(1):69-75.
- 98 de Moraes-Pinto MI, Vince GS, Flanagan BF, et al. Localization of IL-4 and IL-4 receptors in the human term placenta, decidua and amniochorionic membranes. *Immunology* 1997;90(1):87-94.
- 99 Roth I, Corry DB, Locksley RM, et al. Human placental cytotrophoblasts produce the immunosuppressive cytokine interleukin 10. *J Exp Med* 1996;184(2):539-548.
- 100 Kuhn R, Lohler J, Rennick D, et al. Interleukin-10-deficient mice develop chronic enterocolitis. *Cell* 1993;75(2):263-274.
- 101 Svensson L, Arvola M, Sallstrom MA, et al. The Th2 cytokines IL-4 and IL-10 are not crucial for the completion of allogeneic pregnancy in mice. *J Reprod Immunol* 2001;51(1):3-7.
- 102 Sridama V, Pacini F, Yang SL, et al. Decreased levels of helper T cells: a possible cause of immunodeficiency in pregnancy. *N Engl J Med* 1982;307(6):352-356.
- 103 Dodson MG, Kerman RH, Lange CF, et al. T and B cells in pregnancy. *Obstet Gynecol* 1977;49(3):299-302.
- 104 Siegel I, Gleicher N. Changes in peripheral mononuclear cells in pregnancy. *Am J Reprod Immunol* 1981;1(3):154-155.
- 105 Moore MP, Carter NP, Redman CW. Lymphocyte subsets in normal and pre-eclamptic pregnancies. *Br J Obstet Gynaecol* 1983;90(4):326-331.
- 106 Bardeguez AD, McNerney R, Frieri M, et al. Cellular immunity in preeclampsia: alterations in T-lymphocyte subpopulations during early pregnancy. *Obstet Gynecol* 1991;77(6):859-862.

## CHAPTER 1

- 107 Gill TJ, 3rd, Repetti CF. Immunologic and genetic factors influencing reproduction. A review. *Am J Pathol* 1979;95(2):465-570.
- 108 Gehrz RC, Christianson WR, Linner KM, et al. A longitudinal analysis of lymphocyte proliferative responses to mitogens and antigens during human pregnancy. *Am J Obstet Gynecol* 1981;140(6):665-670.
- 109 Petrucco OM, Seamark RF, Holmes K, et al. Changes in lymphocyte function during pregnancy. *Br J Obstet Gynaecol* 1976;83(3):245-250.
- 110 Toder V, Nebel L, Gleicher N. Studies of natural killer cells in pregnancy. I. Analysis at the single cell level. *J Clin Lab Immunol* 1984;14(3):123-127.
- 111 Vaquer S, de la Hera A, Jorda J, et al. Diminished natural killer activity in pregnancy: modulation by interleukin 2 and interferon gamma. *Scand J Immunol* 1987;26(6):691-698.